

33 David Street, Noble Park, Vic 3174



House For Sale

Friday, 19 April 2024

33 David Street, Noble Park, Vic 3174

Bedrooms: 3

Bathrooms: 2

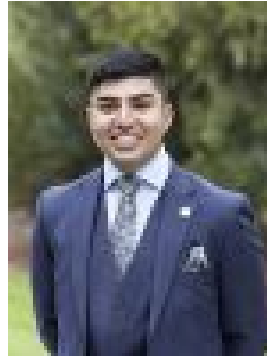
Parkings: 2

Area: 604 m2

Type: House



Chris Utley
0395470000



Talha Mamsa
0432598151

Auction: \$650,000 - \$700,000

On- Site Auction Saturday 11th May at 3:30pm. Contact Chris Utley on 0421 825 338 to arrange an inspection. Welcome to your new family haven nestled in the heart of central Noble Park! This classic and inviting home offers a perfect blend of warmth and charm, promising a cozy retreat for you and your loved ones! If you prefer, the rectangular 604m² land offers a premium 17.2 metre frontage allowing multiple future redevelopment opportunities (STCA). Step inside to discover a generously sized living area, adorned with plush carpeting and equipped with both heating and split system cooling to ensure year round comfort. Natural light floods through the large windows, creating an inviting ambiance. The central kitchen serves as the heart of the house, boasting ample bench and cupboard space, while an adjoining meals area provides the perfect setting for family gatherings. A central family bathroom with bath, toilet and shower caters to the needs of the whole family. The spacious bedrooms each feature built-in wardrobes. With the main bedroom suite boasting its own private ensuite bathroom with shower and basin whilst the 3rd has side access from the driveway and offers versatility, whether you prefer an additional bedroom, a home office, or a dedicated space for a home business. Step outside to your own slice of paradise-a covered outdoor pergola, enclosed for year-round enjoyment, beckons for relaxed entertaining or alfresco dining. The spacious backyard is a haven for outdoor enthusiasts, offering ample off-street parking for cars, boats, and caravans, as well as a single lock-up garage and covered carport. With plenty of grassy space for kids and pets to play, this home is truly one for the whole family! Enviably positioned within short distance to Noble Park & Parkmore shopping precincts, the family vibe of the home continues with its location. Close by to local schools including Wallarano Primary and Keysborough College. Noble Park train station and major freeways such as Eastlink and Dandenong Bypass are also close to your door - Accessibility to everything Melbourne offers is at your doorstep! Contact Chris Utley today on 0421 825 338 to schedule an inspection.