

33 Northridge Drive, Cameron Park, NSW 2285



Sold House

Wednesday, 27 March 2024

33 Northridge Drive, Cameron Park, NSW 2285

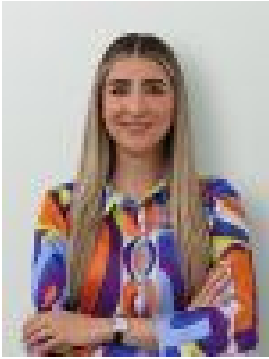
Bedrooms: 4

Bathrooms: 2

Parkings: 2

Area: 540 m2

Type: House



Ana Benitez
0401266799

Contact agent

Ticking every box for both homebuyers and investors, this modern four-bedroom home delivers effortless family living in sought-after Cameron Park. Designed with family in mind, the home expands over a practical, carefully considered single level, revealing great versatility and plentiful living space. Feeling generous, bright and airy, both the open-plan and separate media room create relaxed hubs that are easy to spend time in. Central to it all, the contemporary kitchen sits at the heart of family dinners and laidback entertaining, allowing easy interaction through the living space and out onto the covered alfresco. Perfect for weekend BBQs, the private alfresco looks out over the fully fenced backyard, where kids and pets can enjoy heaps of grassy space to run around on. Location is also a big selling point here. Surrounding by other quality homes within a welcoming community, the home is a short stroll from Pasterfield Sports Complex and Cameron Park Plaza, while nearby link roads make the commute to surrounding areas an absolute breeze.- Neatly presented brick-and-tile home on easy-to-maintain 540sqm. parcel- Spacious single-level layout elevated by abundant natural light, neutral tones and effortless sense of space- Flexible media room offers generous living space, in addition to central open-plan living area- Lovely kitchen boasts modern stainless-steel appliances, a gas stovetop, ample storage and a handy breakfast bar- Open-plan extends naturally to covered alfresco and fenced, wraparound yard- Four spacious bedrooms, made up of master with walk-in robe and three bedrooms with built-in robes- Spotless ensuite and full main bathroom feat. bath and walk-in shower- Internal laundry provides built-in storage and convenient access to yard- Ducted AC ensures home remains comfortable throughout the year- Double lockup garage with internal access- Walk 300m to Pasterfield Sports Complex, BMX track, playground, outdoor gym and skate park- Just 300m to Cameron Park Plaza's shops and eateries, the library and recently opened Harrigan's - Drive 1.6km to zoned Edgeworth Heights Public School- For further shopping and dining, it's a short drive to Edgeworth shops and Stockland Glendale- Nearby Hunter Expressway, M1 and A15 offer easy access to Newcastle and surrounds