

# 33 Wassell Pl, Lindisfarne, Tas 7015

PETERSWALD  
for property

## House For Rent

Friday, 10 May 2024

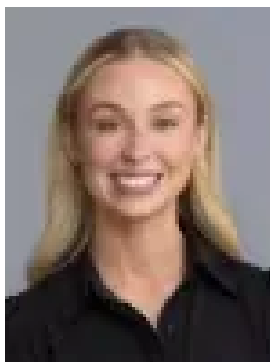
33 Wassell Pl, Lindisfarne, Tas 7015

Bedrooms: 3

Bathrooms: 2

Parkings: 2

Type: House



Brooke Seward  
0362247090



Dani Shields  
0447557893

**\$590 per week**

Located in the quiet, family friendly area of Lindisfarne, This home has been beautifully designed to take in the panoramic views across the Derwent River and is just moments to Shopping Centres, Restaurants, Cafes, Schools, Child Care, Parks and Beaches. THE FEATURES:- Three bedrooms, all with built-in robes, main with walk-in robe.- Spacious, bright and airy open plan living.- Well appointed, modern kitchen with great storage and bench space.- Electric oven, cook top and dishwasher.- Reverse cycle heat pump and panel heating.- Main bathroom with shower over bath.- Ensuite off the main bedroom features huge walk in shower.- Laundry concealed in kitchen, includes plenty of storage.- Off street parking for two cars. - Private, fully fenced yard.THE AREA:- Moments to schools, child care, parks and sports grounds- 5 minute drive to all the great services and amenities Eastlands has to offer- Approx. 10 minute drive to the Hobart CBD.THE TENANCY:Available: From 31st May 2024Pet Policy: Pets considered upon application.Lease Term: 12 months is preferred.Inspection: By appointment only, please register upon enquiry.