

331/121C Jerralong Drive, Schofields, NSW 2762

Apartment For Sale

Friday, 19 January 2024



331/121C Jerralong Drive, Schofields, NSW 2762

Bedrooms: 2

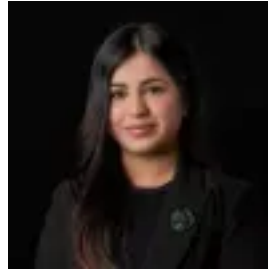
Bathrooms: 2

Parkings: 1

Type: Apartment



Amit Kumar
0288964336



Siya Sachdeva
0288964336

For Sale \$560,000 - \$590,000

Nestled in one of the best pockets of Schofields, within short proximity to the premium Galungarra Public School Catchment and minute's walk to the Schofields Train Station and Schofields Village Shopping Centre, presenting to you a remarkable opportunity, to own this two-bedroom apartment whether to settle in or to invest, this home features comfort and convenience for the whole family. Offering an open-plan living, dining and kitchen area, the layout is effortlessly designed for you to have the perfect space to wind back and relax. Natural light floods the open spaces and shifts out through the glass sliding doors to the extra-large balcony creating yet another perfect blend for indoor and outdoor entertainment. The modern kitchen is well-appointed with floorboards and features high-quality stainless-steel appliances, marble benchtops, burner gas cooktop, oven, glass splashbacks and plenty of storage space. Accommodation comprises two good-sized bedrooms all with built-in robes and the master bedroom features a private ensuite bathroom. Both bathrooms have quality inclusions, including floor-to-ceiling tiles. Other features you will love:- LED downlights- One car space with storage cage- Visitor parking is available- Access to a BBQ area and children's playground in the common area- Video intercom- Secure complex- Builder: ALAND Location highlights:- Short walk to the ever-popular Glory Park- 1-minute drive and a 5-10 minute walk to Schofields Train Station and shopping centre- 3-minute drive and a 10-minute walk to the premium Galungarra Public School- 6-minute drive to Tallawong Metro Station and on-demand bus service available- 5-minute walk to Alex Avenue Medical Centre- Short walk to multiple childcare centres on Alex Avenue- 5-minute walk to St Joseph's Primary School on Alex Avenue- 9-minute drive to Rouse Hill Town Centre and the upcoming Rouse Hill Hospital- Surrounded by multiple parks- Reasonable commute to Sydney CBD Disclaimer: All information contained herein is obtained from property owners or third-party sources which we believe are reliable. We have no reason to doubt its accuracy, however, we cannot guarantee it. All interested person/s should rely on their own enquiries.