

**335 Harveys Road, Ruby, Vic 3953**



**Sold Mixed Farming**

Friday, 22 December 2023

335 Harveys Road, Ruby, Vic 3953

**Bedrooms: 4**

**Bathrooms: 2**

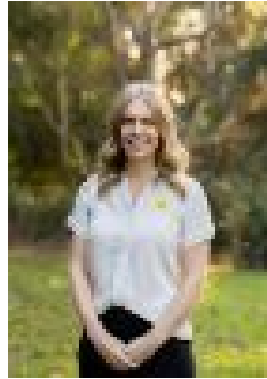
**Parkings: 2**

**Area: 36 m2**

**Type: Mixed Farming**



Michael Hanily  
0417311756



Kasey Bowman

## Contact agent

Rare 91 Acre parcel on the edge of the Leongatha Township offering the perfect lifestyle. With the close proximity to the town centre and the space and availability to generate a return off the acreage, you have the best of both worlds. Features include: Four bedroom homestead with 2 bathrooms and 2 living areas. Multiple living areas with a large dining/lounge area. Separate lounge room and formal dining room. Awesome bungalow ideal for guest accommodation or teenage retreat. Excellent shedding which consists of a disused dairy with yards and a loading race, hay sheds, machinery sheds, substantial piggery sheds, chook sheds and a day box for horses. Abundance of water supply with tanks on every shed, large tank on the house and an electric pump on the Ruby creek. Undulating to some hill country divided into 16 paddocks. 6-8 stables plus a round yard. Close proximity to the South Gippsland Rail trail and bus stops at the front gate. Inspection will impress.