

**339 Lower Plateau Road, Bilgola Plateau, NSW 2107** 

## House For Sale

Friday, 19 April 2024

339 Lower Plateau Road, Bilgola Plateau, NSW 2107

**Bedrooms: 4**

**Bathrooms: 3**

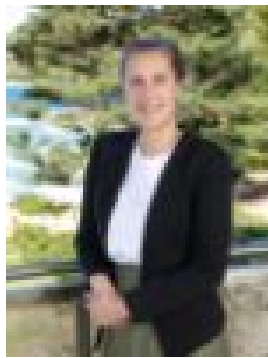
**Parkings: 2**

**Area: 992 m2**

**Type: House**



Noel Nicholson  
0411884290



Tara Jaijee  
0299742300

## Auction | Bidding Guide \$2.4m

Perched in the serene heights of Bilgola Plateau, this exquisitely renovated two-storey residence offers a sublime retreat surrounded by lush gardens and majestic gums. With an elegant design that blends modern sophistication with the natural beauty of its surroundings, this home promises a luxurious lifestyle. Step inside to an open-plan living, dining, and kitchen space, where light dances across crisp white interiors and sleek timber floorboards, reflecting a clean and welcoming design primed for family entertaining. This area flows out to the rear northwest-facing deck, creating the perfect venue for serene afternoons under the open sky, and to the private front yard through stacker-sliding doors. The home offers plush and plentiful accommodations, with tastefully designed bedrooms tailored for family comfort and convenience. The main bedroom is a true sanctuary, featuring ample built-in robes, an ensuite with a freestanding bathtub, and a private balcony that peers out into the leafy treetop canopy. The ground floor features a flexible guest room or rumpus room adjacent to the living areas, a dedicated study and combined laundry and bathroom complete with a double garage with internal access. The home's layout offers versatility, allowing for converting one or more bedrooms into a children's lounge, rumpus room, or an additional home office. Meanwhile, the enchanting rear yard serves as a tranquil retreat, complete with palms, soft tree ferns, and space to roam. Perfectly positioned, the home is just moments from the shimmering waters of Pittwater and the picturesque Bilgola Beach, offering easy access to boating adventures and leisurely beach days. At the end of the street you'll find Angophora Reserve, a palm-lined rainforest and wildlife corridor to explore. This stunning property uniquely blends comfort, elegance, and natural beauty, making it the ideal coastal haven within one hour from Sydney CBD.

- + Elevated family retreat with lush garden surrounds and towering gum trees
- + Two levels of luxury, blending modern flair with natural aesthetics
- + Open-plan design featuring bright interiors, timber floors, and effortless outdoor transition
- + Indoor-outdoor flow from the living room to the private front yard via stacker-sliding doors
- + Expansive northwest-facing deck ideal for relaxing and entertaining under open skies
- + Five bedrooms plus a dedicated home office, designed for versatile family use
- + Luxurious master suite with built-ins, ensuite with bathtub, and private balcony
- + Additional amenities include a ground floor bathroom-laundry and double garage
- + Year-round sun, abundant natural light throughout and friendly resident lorikeets
- + Conveniently located near Pittwater and Bilgola Beach, perfect for coastal lifestyles