

**34/15 Anne Findlay Place, Bateau Bay, NSW 2261**



**Sold Retirement Living**

Thursday, 17 August 2023

34/15 Anne Findlay Place, Bateau Bay, NSW 2261

**Bedrooms: 1**

**Bathrooms: 1**

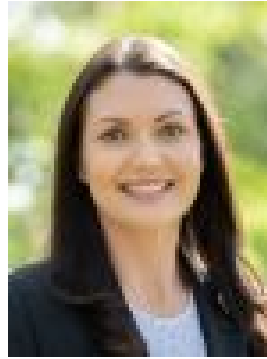
**Parkings: 1**

**Type: Retirement Living**



Jay Hinde

0243344333



Sarah Hinde

0243344333

**\$265,000**

Situated in Kiah Lodge Retirement Village, this neat first floor unit is part of the main building offering easy access to billiard room, library, and common areas and facilities, whilst providing easy access via a ramp from ground floor foyer, or separate exterior steps. Offering flexible living options this spacious 1 bedroom unit is located in a spectacular beachside enclave close to several pristine beaches, National Park with level walking paths, local cafes and major shopping centre, bowling club, golf club and much more!

**The Property:-** Kiah Lodge Retirement Village, over 55's- Vibrant social activities, lots of lifestyle facilities available- Newly painted inside- Large pantry / storage cupboards- Reverse-cycle A/C, NBN connected- Combined bathroom / laundry with washing machine and dryer included- Sunny private balcony with awning- Large bedroom with 2 built-in robes- Private lock-up garage (6x3m) with automatic door- Sunny outlook to gardens and bush reserve- Common sitting area with lounge adjacent to entry- Coastal location with sea breezes

**The Location:-** 600m to Bateau Bay Bowling Club- 850m to Bateau Bay Square (major shopping centre 93+ retailers)- 900m to Wyrabalong National Park, level coastal walking paths- 900m to local boutique shops and cafes- 950m to Blue Lagoon Beach- 1.1km to The Entrance Leagues Club- 1.6km to Shelly Beach and Golf Club

Facilities include library, community room/centre, billiards room, activities/games room, outdoor barbeque area, on-site manager, emergency call system, laundry and home cleaning services, and much more. And with plenty of activities to be part of you will love the vibrant atmosphere and convenient lifestyle. Located amid a premier coastal enclave only a short walk to the beaches, shops, cafes, Bowling Club, Leagues Club, and Golf Club, and bus stops right out the front, this one might be the perfect retirement or downsize option. Contact Jay Hinde on 0405 422 825 for more information.

**Disclaimer:** All information contained herein is gathered from sources we consider to be reliable, however we cannot guarantee or give any warranty about the information provided. All images, border/s, property boundaries and floor plans are indicative of the property and for illustrative purposes only. Any development potential stated herein is suggestive only and may be subject to relevant approvals, as such it is not to be relied upon. All distances and measurements are approximate. Interested parties must solely rely on their own enquiries.