

34/84 Kings Canyon St, Harrison, ACT 2914

ARCHER

Sold Unit

Saturday, 24 February 2024

34/84 Kings Canyon St, Harrison, ACT 2914

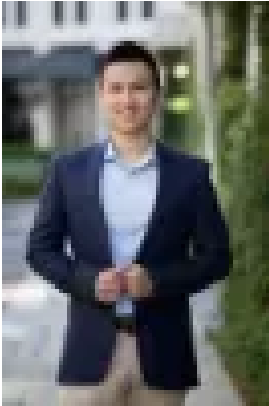
Bedrooms: 4

Bathrooms: 2

Parkings: 2

Area: 170 m2

Type: Unit



Alex Wang

0262625232

\$672,000

SOLD by Alex Wang - Canberra Top 10 Agent Winner. Think of selling? Please call Alex 0402169387 for a market update! Nest or Invest in an Ultra-convenient Location! Ready for move in! Perfectly positioned in the popular suburb of Harrison, only 1-2 minute walk from the light rail station. In close proximity to Franklin Woolworths, newly built Shirley Smith High School, Harrison School, childcare centres, restaurants, cafes, medical centres, public transport, the Gungahlin Town Centre and multiple supermarkets. This modern home is a rare opportunity you don't want to miss! This modern dwelling is designed for a stylish yet low-maintenance lifestyle. The first floor features a bright and airy living and dining area that opens onto a balcony, offering picturesque views over the grass land and out to the mountains. The open-concept kitchen is equipped with gas cooktop, electric oven, stone benchtop and plenty of storage. The other side of this floor is complemented by a generously sized bedroom with a built-in wardrobe, and a large laundry area that includes a toilet. The second floor is home to a spacious master bedroom complete with an ensuite bathroom, along with two additional bedrooms and the main bathroom. All bedrooms on this level are fitted with split system air conditioning units and built-in wardrobes for added comfort and convenience. This lovely home is ready for the next owner to move in! Contact us for more information and confirm your appointment today!

Features:

- Split system heating and cooling units to living/dining and bedrooms
- Modern Kitchen with stainless-steel appliance and ample pantry space
- Stone benchtop
- All bedrooms feature built-in wardrobe
- Gas cooktop
- Extra toilet on first level
- Double Garage with automatic roller door
- Very short walking distance to the Well Station Drive light rail stop
- In close proximity to newly built Shirley Smith High School, Harrison School, childcare centres, restaurants, cafes, medical centres, public transport, the Gungahlin Town Centre and multiple supermarkets

Particulars (all approx.) Year Built: 2016 Living Size: 127 m² + 35 m² Garage + 8 m² Balcony Rates: \$453/quarter Strata: \$780/quarter Rental Estimate: \$685/week EER: 5.5

DISCLAIMER We have obtained all information provided here from sources we believe to be reliable; however, we cannot guarantee its accuracy. Prospective purchasers are advised to carry out their own investigations and satisfy themselves of all aspects of such information including without limitation, any income, rentals, dimensions, areas, zoning and permits. Any figures and information contained in this advertisement are approximate and a guide only and should not be relied upon for financial purposes or taken as advice of any nature. Individuals, Self-Managed Super Funds, companies, anyone or entity, should make their own inquiries and seek their own advice and rely only upon those inquiries and advice. Archer does not guarantee the accuracy of the information above and are not financial advisers or accountants and do not provide any of the above information as advice of any nature.