

# 34 Araluen Drive, Killcare, NSW 2257



## House For Sale

Friday, 26 January 2024

34 Araluen Drive, Killcare, NSW 2257

**Bedrooms: 3**

**Bathrooms: 2**

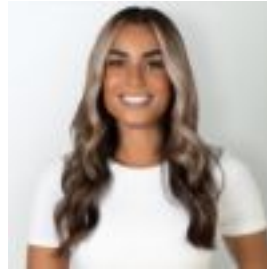
**Parkings: 2**

**Area: 866 m2**

**Type: House**



Cathy Baker



Ines Clarke  
0431597656

## EOI Closing 29th Feb @ 5pm

Gazing over a spectacular Brisbane Water backdrop with never-to-be-built-out views, this delightful bayside home delivers a holiday vibe 365 days a year. Set on a gorgeous, 886sqm parcel and spanning two flexible levels, it provides an ideal layout for visits from family and friends; it offers a fully self-contained suite on the ground floor, plus a generous, free-flowing design on the main level. The wraparound deck runs from end-to-end, erasing the boundaries between indoors and out and delivering magical views across the bayfront.

- Relaxed holiday lifestyle paired with a spectacular bayside setting
- Magical, never-to-be-built out views across Brisbane Water
- Stylish and breezy with a fluid design + three distinct living zones
- Lower level studio, bedroom and bathroom, ideal for weekend guests
- Bright, contemporary kitchen with induction cooktop and entertaining deck
- Sun-drenched alfresco terrace and serene gardens out the back
- Master ensuite boasts wide bay views, features a large walk-in robe
- Gleaming timber floors, ducted climate control and ceiling fans
- Steps to the marina + Hardys Bay shops; 5 min drive to ferry wharf