

34 Capricorn Road, Truganina, Vic 3029



House For Sale

Thursday, 16 November 2023

34 Capricorn Road, Truganina, Vic 3029

Bedrooms: 4

Bathrooms: 2

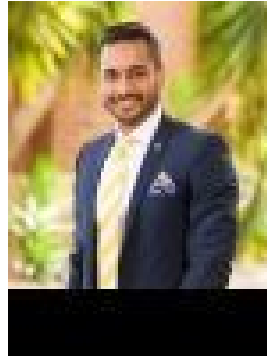
Parkings: 2

Area: 411 m2

Type: House



Kartik Pathak
0466892975



Mark Srivastava
0425400600

\$750,000-\$780,000

Kartik & Ray White Truganina exclusively presents to you this beautiful home in Truganina. Certainly, a not to be missed opportunity to call 34 Capricorn Road Truganina home in the highly sought-after Elpis estate. Elpis is one of the most exciting new developments in the west. Elpis is being developed with absolute attention to detail. It has taken literally years of effort and a team with great vision to create an estate that offers residents the best of the present, while recognising the heritage of the past. This North facing beauty is located park facing, close to a range of convenient amenities including schools, shopping centres, and public transport. With cycling trails, central park, wetlands, picnic areas and playgrounds within walking distance, this property is perfectly positioned. This beautiful property offers a sense of luxury with its practical floor-plan, quality fixtures and fittings and good use of space. This single level family home includes fully landscaped and easily maintained front and rear gardens with alfresco. This remarkable house features:-- Master Bedroom ensuite with a full-size shower, double vanities, and stone benchtop. Decent walk-in robe with self and storage drawer.- Other additional Bedrooms with built-in robes.- Upgraded carpet with soft underlay throughout all bedrooms and front lounge.- Upgraded 920mm solid wood entrance door with translucence glass feature.- Upgraded 920mm crime-safe security door.- Formal front Lounge / Rumpus / Study.- 2740mm upgraded high ceilings. - Remote-controlled Double Garage. - Ducted heating and Evaporative cooling. - Downlights throughout the house.- Open living and dining area.- Walk-in Pantry with power port.- Bosch 900mm stainless steel cooktop.- Bosch 900mm wide rangehood.- Bosch 600mm built-in oven.- Bosch fully integrated dishwasher.- Mist Glass Splashback in the kitchen.- Soft-close cabinet doors and drawers.- 40mm Stone Benchtop with waterfall and power ports.- Upgraded stone benchtop and wall cabinets throughout laundry.- High-quality Fixtures and Fittings throughout.- Low-maintenance front and rear yards with veggie/flower garden.- Zero maintenance TimberTech Composite Decking. Childcare: • Samara Avenue Early Learning • Little learners Day care Centre • Grow n learn Childcare Schools: • Truganina P-9 School • St. Clare's Catholic Primary School • Westbourne Grammar School • Garrang Wilam Primary School Shopping Centres: • Tarneit Central Shopping Centre • Wyndham Village Shopping Centre • Williams Landing Shopping Centre • Point Cook Town Centre • Pacific Werribee Shopping Centre Health/medical • Wyndham Medical Centre • St. Vincents Hospital • Werribee Mercy Hospital It is an address perfectly positioned for convenience and growth. A place where you will take pride in your community and where your neighbours will become your friends. An opportunity like this is RARE to come by and will not last long! To be a part of this exciting experience, living a balanced and active lifestyle at Elpis estate, PLEASE call Kartik on 0466 892 975 to find out more! DISCLAIMER: All stated dimensions are approximate only. Particulars given are for general information only and do not constitute any representation on the part of the vendor or agent.