

34 Elderberry Street, Marsden Park, NSW 2765

Sold House

Monday, 25 September 2023



34 Elderberry Street, Marsden Park, NSW 2765

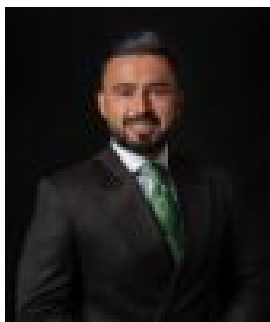
Bedrooms: 4

Bathrooms: 2

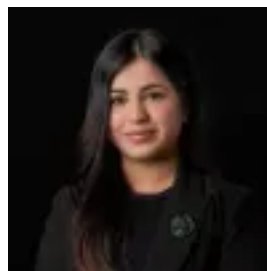
Parkings: 2

Area: 375 m2

Type: House



Amit Kumar
0288964336



Siya Sachdeva
0288964336

\$1,235,000

Nestled in the ever-popular Elara Estate in Marsden Park and situated on 375 sqm of land, this brand-new custom-built home by Medallist Homes has been crafted and architecturally designed with attention to detail to accommodate your every need, offering a luxury lifestyle for you and your family. This stunning property is north-facing and boasts an abundance of space and light that floods the overall home. With a versatile floorplan, the interior is truly second to none, combining the living room, dining area and gourmet kitchen with a seamless flow to the covered alfresco, perfect for entertaining with all your loved ones. There is also a front living room as you enter the home offering a multi-zone living experience. The luxury continues with a mounted electric fireplace, marble tiles throughout the home and large windows that bring in plenty of natural light. The heart of the home is no doubt the designer kitchen which features a bulkhead ceiling with beautifully designed light fittings, a stone benchtop with marble splashbacks, a five burner gas cooktop, 600mm appliances, a dishwasher, a stone island bench, a butler's pantry with extra kitchen sink and vast amount of storage creating the perfect space and built to enhance your cooking experience. The accommodation consists of four generously sized bedrooms all with built-in robes for each family member and floorboards throughout all the rooms. The master bedroom is a true retreat featuring a walk-in robe and a private luxury ensuite with floor-to-ceiling tiles, an LED mirror and two marble basins for you and your partner. The main bathroom also portrays a luxurious bathroom with floor-to-ceiling marble tiles, a modern bathroom and an LED mirror. Features you will love:- LED and designer lights throughout the home - Ducted air conditioning throughout - Builder: Medallist Homes- Electric heater - Designated study area - Good-sized, low-maintenance backyard- Double lock-up garage with internal access Enjoy the ease of being within proximity to local schools, parks, sporting fields, caf+s, and upcoming shopping centres. Disclaimer: All information contained herein is obtained from property owners or third-party sources which we believe are reliable. We have no reason to doubt its accuracy, however, we cannot guarantee it. All interested person/s should rely on their enquiries.