

**34 Fountain Street, Pimpama, Qld 4209**



**House For Sale**

Thursday, 4 April 2024

34 Fountain Street, Pimpama, Qld 4209

**Bedrooms: 4**

**Bathrooms: 2**

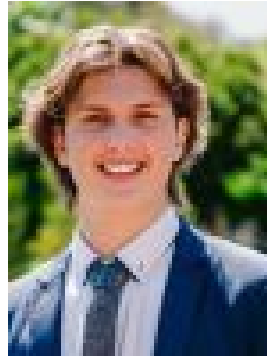
**Parkings: 2**

**Area: 300 m2**

**Type: House**



Jason Atkinson  
0438690656



Brady Temple  
0466783988

## Auction

The owners have instructed that the property will be sold on May 7th. Contact us today for registration details to secure your chance at ownership! Welcome to your new home in the vibrant heart of Pimpama. This stunning property offers a perfect blend of style, comfort, and convenience, making it an ideal choice for those looking for the ultimate in modern living. Step inside and be greeted by the spacious open-plan layout, designed to maximize natural light and create a sense of effortless flow throughout the home. The modern kitchen seamlessly integrates with the living and dining areas, providing the perfect setting for both relaxed family living and entertaining guests. Outside, the covered alfresco area overlooks the low-maintenance backyard, offering a private oasis for outdoor relaxation and enjoyment. Unwind in the comfort of the master bedroom, complete with a convenient ensuite and a spacious walk-in wardrobe, providing a touch of practical luxury. Meanwhile, the remaining bedrooms offer ample space and include built-in robes, ensuring both comfort and convenience for every member of the household. With easy access to local amenities, schools, and parks, this home truly has it all. Features include • Large master bedroom features a walk in robe, split system air-conditioner and a private ensuite with his and her sinks • Three remaining bedrooms • Two modern bathrooms • Air conditioned open plan living area • Spacious kitchen with an electric cooktop • Air-conditioning in the living area and master bedroom • Ceiling fans throughout • Minimal maintenance yard • Multiple outdoor living areas, perfect for entertainment • Double garage • 173m<sup>2</sup> Internal size • 300m<sup>2</sup> Land size • NBN ready • VACANT! Conveniently located just around the corner from Pimpama City Shopping Center, residents will enjoy easy access to a wide range of retail outlets, dining options, and essential amenities. Surrounded by parks, schools, and recreational facilities, this property offers the perfect balance of urban convenience and natural beauty. With the M1 nearby, commuting to surrounding areas is a breeze, offering unparalleled connectivity for work or leisure. Plus, with the new train station set to be completed in late 2024, this property will soon be even closer to major transportation hubs. Don't miss out, contact us today! Disclaimer: This property is being sold by auction or without a price and therefore a price guide cannot be provided. The website may have filtered the property into a price bracket for website functionality purposes. Important: Whilst every care is taken in the preparation of the information contained in this marketing, Ray White will not be held liable for the errors in typing or information. All information is considered correct at the time of printing.