

34 Nankeen Loop, Beveridge, Vic 3753

Sold Residential Land

Monday, 14 August 2023

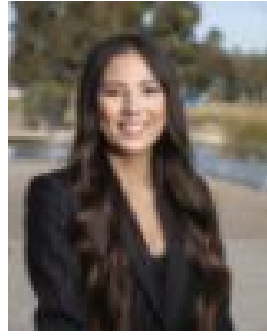
34 Nankeen Loop, Beveridge, Vic 3753

Area: 512 m2

Type: Residential Land



Daniel Di Battista



Vanessa Loblely
0477677855

\$330,000

Enviably positioned in a thriving Minton Place neighbourhood, this fully-titled allotment presents an increasingly rare opportunity to secure the perfect block of land for your perfect new home. Well-proportioned, the block itself is approximately 512 square metres in size (16m frontage x 32m depth) with the added advantage of uniform dimensions and minimal gradient across the site. Building in Minton Place, you'll also reap the rewards of a well-planned community focused on quality family living with tree-lined streets, all services available and plenty of green spaces allocated. The convenience of Beveridge Primary School around the corner along with the open spaces of Beveridge Reserve, it's also close to the historic Hunter's Tryst Tavern, Mandalay Golf Course, local kinder/childcare facilities and the Hume Freeway.