

34 Nerreman Gateway, Eltham, Vic 3095



House For Sale

Wednesday, 12 June 2024

34 Nerreman Gateway, Eltham, Vic 3095

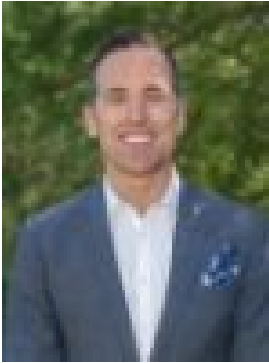
Bedrooms: 4

Bathrooms: 2

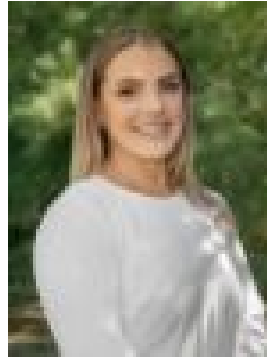
Parkings: 4

Area: 789 m2

Type: House



Scott Nugent
0438054993



Hayley White
0423523926

\$1,500,000 - \$1,600,000

EXPRESSIONS OF INTEREST CLOSING TUESDAY 2ND JULY AT 3PM (UNLESS SOLD PRIOR) Step into luxury with this exceptional executive-style family residence, offering 50 squares of meticulously designed space that seamlessly integrates elegance, comfort, and practicality. The classical facade, featuring a spacious verandah and intricate wrought iron balustrades, sets the stage for a home exuding timeless charm. Built for the owner of L.P. Warren Homes, this property showcases premium finishes and meticulous craftsmanship, all lovingly maintained with no expense spared. As you enter, the grandeur of the double-height entryway immediately captivates. The formal lounge offers stunning views through plantation shutters, complemented by premium carpet and fresh paint, creating a sophisticated ambiance. The home features four generously sized bedrooms, each equipped with large robes, shutters, and plush carpets. The master suite occupies the entire top floor and boasts a versatile retreat space, a luxurious ensuite, and a spacious walk-in robe with fitted cabinets. The gourmet kitchen serves as the heart of the home, complete with polished hardwood floors, a stone-topped island bench, 2pac cabinets, and premium Fisher & Paykel appliances, including a double oven and dishwasher. A garden window offers picturesque views, enhancing the cooking and dining experience. This home is an entertainer's paradise. The casual dining and lounge area, adorned with beautiful curtains and a split system for comfort, provides an inviting space for gatherings. The enormous rumpus/theatre room, with motorized curtains and sophisticated pelmets, overlooks the outdoor entertainment area, making it perfect for hosting guests. The outdoor space, featuring a new roof and café blinds, is ideal for entertaining in any weather. The virtually maintenance-free gardens include established trees, new fencing, and robust retaining walls, creating a serene and private environment. The four-car garage offers ample space for a workshop or man cave, with internal access to the dining area. Additionally, the abundant under-house storage is perfect for a wine cellar or any storage needs. Located in one of Eltham's most desirable neighbourhoods, this home provides easy access to Eltham Village and the train station. It is also close to highly regarded schools, parklands, sporting fields, and walking trails. This property combines style, comfort, and functionality with premium amenities and exquisite attention to detail.