

35/33 Lacey Road, Carseldine, Qld 4034



Townhouse For Sale

Tuesday, 21 May 2024

35/33 Lacey Road, Carseldine, Qld 4034

Bedrooms: 3

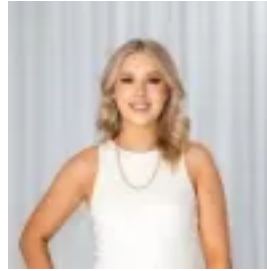
Bathrooms: 2

Parkings: 1

Type: Townhouse



Jonathan Wein
0732649000



Bianca Reynolds
0732649000

Expressions Of Interest

This immaculate and near-new three-bedroom townhouse is positioned within a boutique complex at The Groves, Carseldine. It is perfect for those looking for a home that is modern and stylish, close to all amenities and low maintenance. The neutral palette of the interiors offers a contemporary aesthetic, and this extends to the chic kitchen with quality cabinetry, stone bench tops and European appliances. The air-conditioned open plan living and dining area is light-filled and opens to the private covered terrace. The home offers three spacious bedrooms, with built-in robes, ceiling fans and two of the bedrooms are air-conditioned, providing year-round comfort. There are two beautifully appointed bathrooms, along with an additional powder room downstairs. With great dining options, shopping, and Carseldine Markets at your doorstep, this is a townhouse that will provide an enviable lifestyle. Features: * Main bedroom with study nook/retreat and modern ensuite * Modern kitchen with contemporary quality cabinetry, stone benches, dual sink, and European appliances * Air-conditioned and spacious open plan living and dining area * 3 Bedrooms, with built-in robe + study area * Beautifully appointed bathroom, with separate bath * Additional powder room downstairs * Covered and private terrace with ceiling fan * Internal laundry * Neutral and stylish palette throughout * Ceiling fans, plantation shutters and security screens throughout * Single lock-up garage with internal access + additional car space * Barbeque area in complex Location: * 950m to Carseldine Central Shopping, tennis and dining precinct * 2.6km to Bunnings and Aldi * 2.1km to Carseldine Train Station * 2km to Carseldine Markets * 2.2km to Holy Spirit College and 2.6km to St Flannan's Primary * 3km to Aspley East State and 2.4km to Aspley State High (catchment) schools * 5km to Westfield Chermerside * 16.5km to City Disclaimer: "Information contained on any marketing material, website or other portal should not be relied upon. You should make your own enquiries and seek your own independent advice with respect to any property advertised or the information about the property." LJ Hooker Albany Creek | Warner also offer a property management service. If you're considering renting your property, are looking to buy or would like a free review of your current portfolio, please call our main office on (07) 3264 9000."