

35/5-15 Boundary Street, Roseville, NSW 2069



Apartment For Rent

Monday, 13 May 2024

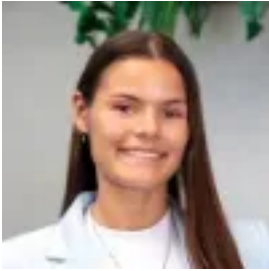
35/5-15 Boundary Street, Roseville, NSW 2069

Bedrooms: 2

Bathrooms: 2

Parkings: 1

Type: Apartment



Stefanie Musumeci
0299086099

\$800 pw

Ideally located in Roseville's full brick construction is this attractive two-bedroom residence. Offering quality finishes throughout with convenience to match acquiring this property as your next rental is a must. Features include: - High ceilings with light and space in mind - Caesarstone benchtops in kitchen with quality stainless steel appliances - Bedrooms with built-in-robies - Modern bathroom with bathtub - Good sized balcony - Internal laundry with dryer - Underground parking with lift access plus storage - Ducted reverse cycle air-conditioning - Intercom - Pets friendly
Surrounding Area: - Short Stroll to Roseville train station - Minutes to great restaurants, cafes and Westfield Shopping Centre. - 'CATCHMENT AREA' for Roseville Public School, Chatswood Selective High School, Roseville College. **Photos are from other unit in the same complex with a similar layout. In the interest of protecting our tenants against leaking of any personal data, please only pay your holding deposit to our agency upon receiving approval from DiJONES Real Estate. You will then receive a remittance, in the form of a trust account receipt, from DiJONES to confirm receipt of your deposit.