

35 Berambing Street, The Ponds, NSW 2769



House For Sale

Thursday, 21 March 2024

35 Berambing Street, The Ponds, NSW 2769

Bedrooms: 5

Bathrooms: 3

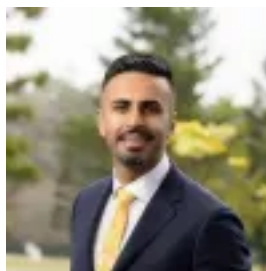
Parkings: 2

Area: 592 m2

Type: House



Sukhbir Sidhu
0286105950



Zain Tariq
0286105950

AUCTION - MUST BE SOLD!

Sukhbir & Zain from Ray White Kellyville Ridge Presents : This impressive two level home welcomes with generous dimensions, quality finishes and a verdant leafy backdrop creating a wonderful sense of privacy. Grandeur immediately captivates within an irresistible setting, showcasing timeless sophistication underscored by a stunning street presence. Designed and built with quality finishes. Family versatility is bought to the fore with flexible spaces designed to accommodate a growing families changing needs. Exuding prestige and a stunning contemporary style, this custom crafted, designed home delivers an indulgent lifestyle with easy care attributes and many luxury extras. Step inside to spacious living & dining space and extensive lawn space for children to play. Ideal for large or intergenerational families, the home features an abundance of space and is ready for immediate enjoyment , its premium location offers comfortable and convenient lifestyle with a short walk to schools, shops, parks and Tallawong Metro Station. This immaculate home features:~ Five Spacious bedrooms~ Three immaculate bathrooms~ Bedroom downstairs with full bathroom , ideal for guests or extended family.~ Dedicated Media Room or optional sixth bedroom ~ Spacious Formal lounge & Formal Dining~ Large open plan dining and living area~ Spacious Rumpus upstairs~ Gourmet kitchen with quality appliances~ Multi zoned ducted reverse cycle air conditioning~ Alarm system~ Double auto garage

Location Highlights:~ School Catchment of Riverbank Primary & The Ponds High School~ 2 Minutes drive to The Ponds Shopping Village~ 5 Minutes (approx) drive to Stanhope Shopping Village and Rouse Hill Town Centre~ 3 Minutes drive (approx) to the Tallawong metro station~ Convenience of Schofields Station

We highly recommend you visit this masterpiece. For more information, please contact us at Ray White Kellyville Ridge. **Disclaimer:** All information contained herein is gathered from sources we believe to be reliable. However, we cannot guarantee its accuracy. We do not accept any responsibility for its accuracy and do no more than pass it on. Any interested persons should rely on their own inquiries