

35 Cabrera Crescent, Beerwah, Qld 4519



Sold House

Thursday, 12 October 2023

35 Cabrera Crescent, Beerwah, Qld 4519

Bedrooms: 2

Bathrooms: 2

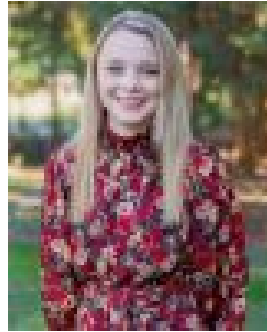
Parkings: 4

Area: 3622 m2

Type: House



Matthew Kimpton
0421795807



Deonie BaleBradford
0409947485

\$980,000

Matthew Kimpton, Deonie Bale-Bradford and the Ray White Beerwah team are thrilled to welcome you home to 35 Cabrera Crescent, Beerwah. Nestled in the picturesque Sunshine Coast Hinterland, this enchanting 1921 Queenslander style high-set timber home offers a perfect blend of classic charm and modern comforts. With a coveted north-facing outlook and an expansive 3,622sqm block, this residence invites an abundance of natural light and captures the essence of relaxed Queensland living. Internal Features include:- The master king sized bedroom boasts an ensuite and a thoughtfully designed built-in robe, providing a private haven for relaxation. The ensuite is freshly renovated with a stand-alone bath, shower, separate toilet, and single vanity with stone bench-top.- The second king sized bedroom also features a built-in robe, offering comfort and convenience.- The main bathroom offers a shower, with a separate toilet.- The kitchen is complete with a step-in pantry, plenty of cupboard storage, beautiful laminate bench-tops, a 900mm gas cook-top, electric oven, and electric appliances.- Ceiling fans are thoughtfully positioned throughout the property, ensuring comfort in all seasons. Additionally, a split system air conditioner offers tailored climate control.- The internal laundry provides functionality and ease of use, with an additional toilet.- All windows open out to the beautiful nature, providing a beautiful breeze throughout the property.- Beautiful French doors offer an effortless and welcoming flow onto a large deck, perfect for entertaining friends & family.- Enjoy raised 3m ceilings throughout the home for an added touch of luxury.- Modern fixtures throughout the home, and VJ panelling to compliment the era of traditional living.- Polished timber flooring will make you 'feel at home'. Step outside to discover...- 4 car garage and 2 carport spaces cater to all your parking needs, providing secure accommodation for vehicles. There is also a drive through side access to the property for convenience.- A generous 13 x 9 garden shed with remote doors, standing at 3.8 meters high, offers abundant storage space and the potential for a workshop or hobby area.- The property is fully fenced, creating a secure and private sanctuary for outdoor living.- The iron roof, a mere 2.5 years old, ensures durability and protection from the elements.- A substantial 20,000-liter water tank, equipped with a 1KW pump and a filtration system, contributes to sustainable living, while eight taps around the property offer easy access to bore water.- A septic tank services the property, providing eco-friendly wastewater treatment.- Bottled gas to the property that supplies the gas cooktop.- A kid's sandpit on the property to keep your kids or grandkids entertained.- The deck & veranda overlooks a firepit on the property, perfect to create memories on those cooler nights.- The property has a variety of fruit trees such as mango, banana, orange & mulberry. There is also a herb garden for those that love to add flavour to the cooking. - Sitting on a generous 3,622 sqm block, there is ample space for gardens, recreation, and potential future expansions. Beerwah is an idyllic location to feel 'out of town' with amenities right at your doorstep. The town itself offers local and reputable schools, Woolworths, Fresh & Save, Butchers, Medical Facilities, Cafe's, Restaurants, Hairdressers, bus routes, a train station and more. With less than 30 minutes' drive to the Sunshine Coast Beaches and just over 60 minutes to Brisbane CBD, you are in the perfect position for quiet living while still enjoying convenient access to amenities. This stunning property presents a unique and incredible opportunity to embrace the Sunshine Coast Hinterland lifestyle, combining the absolute best of traditional Queensland living. Don't miss your chance to make this stunning residence your own. For inquiries or to schedule a viewing, please contact Matthew Kimpton on 0421 795 807, or Deonie Bale-Bradford on 0409 947 485. **IMPORTANT NOTICE - AUCTION ONSITE - SATURDAY 18th NOVEMBER AT 1:00pm** *Disclaimer: Whilst every care has been taken in the preparation of this marketing, Ray White Beerwah will not be held liable or responsible for any errors in information displayed. All parties should carry out their own inquiries.