

35 Fellows Street, Weir Views, Vic 3338



Sold House

Wednesday, 21 February 2024

35 Fellows Street, Weir Views, Vic 3338

Bedrooms: 5

Bathrooms: 2

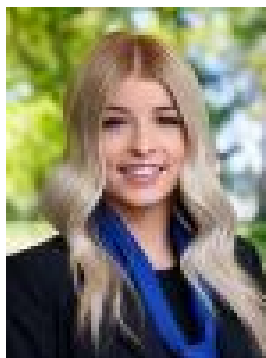
Parkings: 2

Area: 509 m2

Type: House



Shane Spiteri
0353101333



Britteny Cooke
0426211338

\$645,500

Situated on an impressive 509m²(approx.) allotment in one of Weir Views most sought-after locations, sits this beautiful residence showcasing quality and ample space for a family. This home is ideally located within a short distance to lots of existing schools including Al Iman College, Staughton College, Melton South Primary School, St Anthony Primary School and future government schooling, pre-schools, Melton South Train Station, Opalia Shopping Centre, Station Square, leafy and tranquil walking tracks along the Melton Reservoir and so much more upcoming. Making this location second to none. Upon entering this stunning home you will be amazed by its immaculate presentation. At the front of this great floorplan, you are greeted by the spacious formal living area. Opposite you have the huge master bedroom sits at the front of the home showcasing ample space with a large walk-in robe and stunning master ensuite. Moving through the home the huge kitchen provides ample space for the growing family, complete with a 20mm stone bench, 900mm gas cooktop/electric oven, dishwasher, ample bench space and an abundance of storage including a extensive walk-in pantry. This beautiful kitchen overlooks the large open plan meals and living area with natural enhancing light creating such a inviting atmosphere with more than enough space to entertain guests or for your growing family. Continuing through to your third living space also provides an ideal space for a theatre room or another space for the family to be entertained. The four remaining bedrooms are all generous in size and feature built in robes, all while being serviced by a large central bathroom. Moving outside, this great property is accompanied by the drive through access through the garage into a concreted area, perfect for storing cars, trailers, boats. The grass yard at the back of the property provides ample space for kids and pets. Special features of this beautiful home include: ducted heating, split system cooling, front and back landscaping, ample storage, double car garage with internal and drive through access and much more. To see this beautiful home for yourself before it's too late, Call Shane or Ryan today! (Photo ID is Required at all Open For Inspections) At YPA Melton "Our Service Will Move You" DISCLAIMER: Every precaution has been taken to establish the accuracy of the above information but it does not constitute any representation by the vendor/ agent and agency.