

35 Filante street, Stanhope Gardens, NSW 2768



Sold House

Friday, 22 September 2023

35 Filante street, Stanhope Gardens, NSW 2768

Bedrooms: 5

Bathrooms: 2

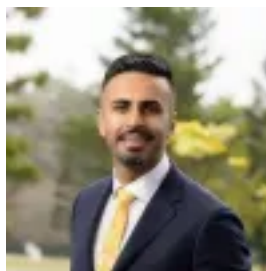
Parkings: 2

Area: 694 m2

Type: House



Sukhbir Sidhu
0286105950



Zain Tariq
0286105950

\$1,760,000

Sukhbir and Zain from Ray White Kellyville Ridge Presents : Original Eden Brae Striking from the outside, displaying gorgeous character-detailing inside, here is a home that offers the perfect balance of form and function. Finished to an exceptional standard, it offers a combination of living and dining spaces that flow out to a beautiful outdoor entertaining area. Situated within a short distance to schools, shops and parks, this home will delight buyers. On a Parcel of oversized land (694 sqm APPROX)*FREE BUILDING AND PEST AVAILABLE*Other quality features:~ Five bedrooms with potential of private office space or separate access to the entrance. ~ Huge main master bedroom with walk-in-robe & ensuite including Spa bath.~ Formal Lounge with high ceilings and fire place~ Dedicated covered decking area with bi-fold windows for usage of the area. ~ Modern open plan kitchen with Caesarstone bench-top~ Open plan Family & dining area~ Media Living area with integrated speaker system, adjacent to the outdoor area and dining area. ~ Oversized outdoor pergola with BBQ entertainment area~ 3 cars parking on driveway additional to 2 cars in garage~ Oversized shed at backyard with solid shelving for storage with electrical supplies for man cave~ Good size backyard potential for future retreat or swimming pool landscaping. ~ Ducted air conditioning and inducted vacuum system ~Alarm System*Community Club house with bbq area, tennis court, swimming pool and entertainment space for family events*Location Highlights:~ School catchment of Kellyville Ridge Public & Glenwood High School~ Convenience of Stanhope Shopping Village & The Ponds Shopping Village~ Convenience of Playing fields, Tennis Court, Gym and Rouse Hill Town CentreWe highly recommend you visit this masterpiece. For more information, please contact us at Ray White Kellyville Ridge.In light of the recent lifting of restrictions on open homes, we ask that if you wish to visit one of our properties that you adhere to the health guidelines issued by the NSW Government. Please remain home if you are feeling unwell, minimise contact, and maintain 1.5m physical distancing inside and outside the property. As we work through this process, we kindly ask you to be patient during an inspection and follow the advice of the agent.Disclaimer:All information contained herein is gathered from sources we believe to be reliable. However, we cannot guarantee its accuracy. We do not accept any responsibility for its accuracy and do no more than pass it on. Any interested persons should rely on their own inquiries