

35 Kareela Drive, Girraween, NT 0836



Sold House

Monday, 14 August 2023

35 Kareela Drive, Girraween, NT 0836

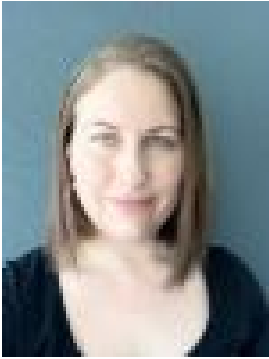
Bedrooms: 3

Bathrooms: 2

Parkings: 2

Area: 2 m2

Type: House



Nuriye Piening
0429826650

\$753,000

Here is an opportunity to own a beautiful property in the popular rural suburb of Girraween. Winding your way along the gravelled driveway through lush native trees, you are presented with a picturesque view of this lovely two-story family home. The downstairs features a well-appointed kitchen with modern appliances and a server, two good sized bedrooms with built-in, a main bathroom, and a large open-plan lounge and dining area. High ceilings throughout the living areas with sliding doors that open out onto a spacious verandah. Upstairs you will find the magnificent main bedroom and ensuite. The main bedroom looks out over the main living areas and includes built in robes. 2 large double glass sliding doors open out onto a large deck that overlooks the yard and gives the bedroom plenty of natural light. Near to the home, you will find a large double shed with a front section that has been converted into a fully insulated office space with air conditioning. Adjoining the home is also a shaded double carport. To really enjoy the rural lifestyle the property also includes a tiled pool with secure pool fencing and landscaping and a large animal pen. Features Include: - 5 acre property- Fully fenced property with solar powered gate - Tiled floors, aircons and fans throughout - Three bedrooms - Large spacious living areas - Bore rated at 4lps - Landscaped gravel driveway - Large verandah off living area - Large deck off main bedroom - 3 phase power- Shed with 2 manual roller doors, 1 PA, power plus office with aircon with separate entry - Gravity feed tank stand with bathroom enclosed underneath - Swimming Pool - 9 Stations auto reticulation - 4 min to Girraween Primary School - 7 mins to Coolalinga Central - 10 mins to Good Shepherd School, Howard Springs - 9 minutes to Freds Pass markets - 30 minutes to Darwin CBD