

**35 Knox Street, Clovelly, NSW 2031**

**PPD REAL ESTATE**

**Sold House**

Friday, 6 October 2023

35 Knox Street, Clovelly, NSW 2031

**Bedrooms: 5**

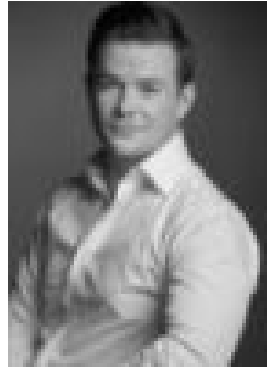
**Bathrooms: 4**

**Parkings: 1**

**Type: House**



Alexander Phillips  
0283551117



Gavin Lewis  
0405563115

## Contact agent

Channelling the natural tones of its coastal setting, this freestanding beach house is perched above Clovelly Beach affording sweeping views to the ocean and a big sky outlook evoking a sense of freedom. A streamlined timber-battened facade makes a striking addition to the streetscape and a playful contrast to the light and airy living spaces where American Oak, glass and marble play an integral role in defining the interiors. Spread over three levels, the main living area is open to the vista with a show-stopping New York marble kitchen as centrepiece and a cantilevered deck that engages with the outdoors and the ocean beyond. Designed with sustainability at its core, the five-bedroom home offers superb flexibility of space two master suites, one on the lower level that opens to the garden and one on the top floor with a view-swept deck. Multiple living areas make for a happy family life but it's the private landscaped garden that's the star of the show with a mosaic-tiled glass-edge pool that shimmers in the sunshine and leafy greenery all around underscoring a sense of wellbeing. In a prized pocket of Clovelly with the neighbourhood village at one end of the street and Varna Park at the other, this is a home that has been crafted to endure in the landscape and create the perfect environment for families to live, relax and entertain. \*Bluestone entry and cobblestone drive\*Light, airy and fabulously feel-good \*5 double bedrooms, 4 with built-ins\*Parents' retreat with ocean-view deck\*Dressing room and a designer ensuite\*Living room with a Jetmaster fireplace\*American Oak floors and custom joinery\*High-spec new York marble island kitchen\*Walk-in pantry, integrated fridge/freezer\*View-swept open plan living and dining\*Blackbutt deck with built-in barbecue\*Lower level casual living/rumpus room\*Entertainer's deck and bluestone terrace\*Sunny landscaped child-friendly garden\*Mosaic-tiled pool and a lush level lawn\*4 European-appointed baths, 2 ensuite\*2 with a bath, underfloor heating\*Solar power system, cross-flow breezes\*Off street parking, extensive storage\*Clovelly Public School catchment zone\*Stroll to village life, 350m to Burnie Park