

35 Larool Crescent, Castle Hill, NSW 2154

MANOR

House For Sale

Saturday, 6 April 2024

35 Larool Crescent, Castle Hill, NSW 2154

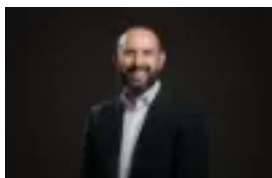
Bedrooms: 4

Bathrooms: 2

Parkings: 2

Area: 701 m2

Type: House



STEVE FORD
0408028176



KERRY WILSON
0403351257

New to Market

Welcome to 35 Larool Crescent, Castle Hill, where tranquility meets convenience in the heart of a family-friendly neighborhood. Nestled within this quiet and leafy street lies a character-filled split-level home, promising a serene haven for you and your loved ones. Step inside to discover a well-maintained property brimming with architectural charm. Soaring timber feature ceilings greet you, while floor-to-ceiling glass windows frame tranquil garden views, inviting the outside in. This much-loved home offers not just comfort, but also unparalleled convenience. Just a stone's throw away from Castle Towers, where shopping, dining, and entertainment await. The Metro station being a mere 570 metres away, commuting becomes a breeze. For families, education is paramount and here, you'll find yourself just moments away from Castle Hill public and high schools, ensuring quality education for your children. But perhaps one of the most exciting prospects lies in the future. By 2024, the extended metro will whisk you from Castle Hill to Sydney CBD in just 33 minutes. With the NSW planning minister proposing potential rezoning, this property stands as a prime candidate for future development opportunities. Sitting on a generous 701.9m² corner block, currently zoned R3 - Medium Density Residential, this property offers immense potential. With a frontage of approximately 36m to 38m. Serenity, convenience, investment, and growth - you're entitled to have them all in one. Whether you're looking for your forever home or considering future development opportunities don't miss out on this rare opportunity.