

35 Mason Place, Shearwater, Tas 7307

Sold Residential Land

Friday, 9 February 2024

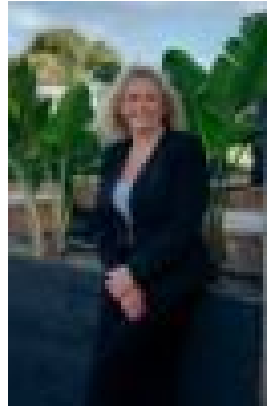
35 Mason Place, Shearwater, Tas 7307

Area: 721 m2

Type: Residential Land



John Price
0439340280



Corinne Price

Contact agent

Located in the popular coastal community of Shearwater is this large building allotment of 721m². Perfect for those looking to build their dream home with the long boundary to the North maximising all day sun, it has ample space for a generous residence and large shed or to develop with 2 villas. It is fully fenced in contemporary grey colour bond and has services connected. Set at the end of a quiet cul de sac and within walking distance of the local Woolworths shopping centre, Shearwater Resort and golf course and beautiful sandy beaches, this is the ideal opportunity to take advantage of the completely relaxed lifestyle that this beautiful area has to offer. • Generous 721m² block • Fully fenced in colour bond • Quiet cul de sac location • Sunny northerly aspect • Close to beaches, shops and resort