

35 McInnis Circuit, Driver, NT 0830



Sold House

Friday, 10 May 2024

35 McInnis Circuit, Driver, NT 0830

Bedrooms: 4

Bathrooms: 2

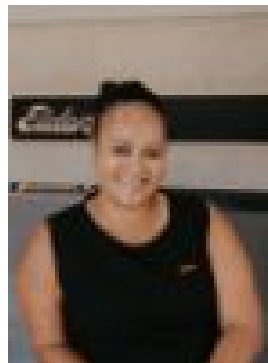
Parkings: 2

Area: 825 m²

Type: House



Rayna Kirikino
0400456484



Macca Houkamau
0417198527

\$400,000

Set behind secure gated entry with ample parking, this elevated home is surrounded with established easy-care gardens and wide open lawns perfect for the kids and pets to play. Tucked into the back corner is an in-ground spa to relax and enjoy. On the ground level is a large outdoor entertaining space that overlooks the spa and the gardens making it the ideal area for the BBQ or to watch a game with the family or friends while the kids splash about in the spa or kick the footy around in the back yard. There is a full bathroom and storage room plus a 4th bedroom / home office / rumpus room downstairs, as well as the laundry amenities all with their own space. Upstairs the home has a small balcony that overlooks the gardens below. Inside is an open plan living and dining room with glossy timber flooring underfoot and banks of windows to let in the natural light and the soft breezes. The kitchen is modern with wrap around counters and banks of built-in storage space with overhead cupboards as well. There are three good sized bedrooms upstairs each with timber flooring and banks of louvered windows along with a built-in robe and air-conditioning to each. The master is of course the largest and located at the far end of the home affording it a quiet disposition away from the living areas. Within the neighboring suburb there is a swimming pool and community tennis courts along with a senior campus and beyond this there are both public and private schooling options. Nearby is the Marlow Lagoon Dog Park and community parklands along with the Durack Golf Course and so much more. The home is under 5 minutes from the Palmerston CBD.