

# 35 McLaughlin Crescent, Mill Park, Vic 3082

## House For Sale

Thursday, 11 April 2024

35 McLaughlin Crescent, Mill Park, Vic 3082

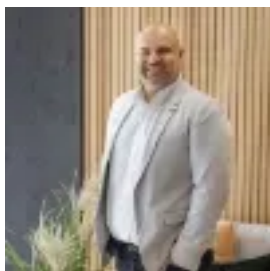
Bedrooms: 3

Bathrooms: 1

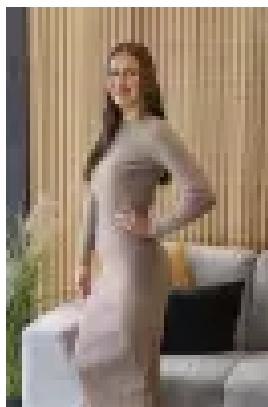
Parkings: 2

Area: 604 m2

Type: House



Con Kara  
0391111707



Imogen Hammond  
0391111707

## **\$600,000 - \$660,000 AUCTION THIS SATURDAY AT 1PM**

Ideally situated with convenient access to Westfield Plenty Valley, South Morang Train Station, Stables Shopping Centre, Uni Hill, Plenty Road Trams, RMIT, esteemed educational institutions, and picturesque parklands, this exceptional opportunity caters to both residents and investors alike. Featuring three generously sized bedrooms, a spacious lounge upon entry, a central bathroom, and a fully equipped kitchen with ample cabinetry, complemented by an adjacent meals area and more. Step outside to discover a large deck which overlooks a sizable rear yard accompanied by an oversized carport. Additional highlights include the comforts of heating and cooling, hardwood floors, NBN connectivity, beautifully landscaped gardens, and off-street parking.