

**35 Melbourne Street, Oxley Park, NSW 2760**



**Sold House**

Wednesday, 6 September 2023

35 Melbourne Street, Oxley Park, NSW 2760

**Bedrooms: 3**

**Bathrooms: 1**

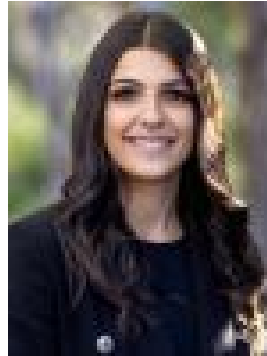
**Parkings: 3**

**Area: 828 m2**

**Type: House**



Peter Diamantidis  
0296234033



Amber Boumelhem  
0296234033

**\$820,000**

We are pleased to present 35 Melbourne Street, Oxley Park brought to you by award winning agent Peter Diamantidis. Situated on 828sqm of land and Zoned R3 Medium Density, this 3 bedroom brick home is an incredible opportunity for a first home buyer or investor with endless development potential. Located in a much sought after location of Oxley Park, this house is approximately a 6 minute drive to St Marys Train Station which is soon to be a metro stop for the new airport currently under construction. This property complies to build a granny flat or duplex STCA. WHAT WE LIKE ABOUT THIS PROPERTY:- 3 spacious bedrooms - Timber floorboards throughout- Split system air conditioning- Neat & tidy kitchen with ample cupboard space- Separate lounge and dining area- Long term tenant happy to stay!- Property does require TLC For further information, please contact Peter Diamantidis 0404 051 702 or Amber Boumelhem 0452 669 516. Disclaimer: The above information has been gathered from sources that we believe are reliable. However, we cannot guarantee the accuracy of this information and nor do we accept responsibility for its accuracy. Any interested parties should rely on their own enquiries and judgment to determine the accuracy of this information for their own purposes. Images are for illustrative and design purposes only and do not represent the final product or finishes.