

**35 Morna Street, Greenfield Park, NSW 2176**



**House For Sale**

Friday, 24 May 2024

35 Morna Street, Greenfield Park, NSW 2176

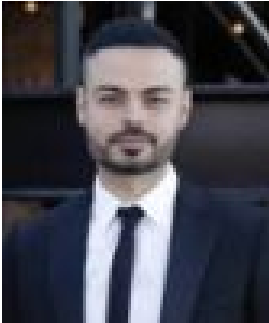
**Bedrooms: 4**

**Bathrooms: 3**

**Parkings: 2**

**Area: 556 m2**

**Type: House**



Martin Yokhana  
0402874843



William Yousif  
0461538975

## Auction

Ray White Wetherill Park & Team Yokhana are proud to present to the market 35 Morna Street in Greenfield Park. This home displays an outstanding layout, with amazing character and charm throughout both levels of the home and an outstanding location, just a stone's throw away from the local shops, you really don't want to miss out on this one! Discover suburban living in one of the best streets in Greenfield Park. Experience unparalleled comfort, convenience, and charm from the moment you step inside, setting the stage for a life of contentment. Enjoy easy access to schools, shopping centers, and amenities, offering the perfect blend of convenience and connectivity. With multiple living spaces, 4 bedrooms & 2 bathrooms and a secure double lock up garage, this home is designed for relaxation and gatherings. The open-concept layout encourages seamless flow between living, dining, and kitchen areas, catering to your every need and desire. Step into your private back yard perfect for entertaining or quiet evenings with family. Whether it's summer barbecues or cozy evenings, enjoy the serenity and beauty of your outdoor surroundings year-round. This double-story residence offers everything you've dreamed of and more, whether you're a growing family or a discerning buyer seeking comfortable living. Offering: • Four bedrooms featuring built-in wardrobes • Master bedroom with ensuite and walk-in wardrobe • Two generous bathrooms with a third toilet in the downstairs laundry • A combination of two living and two dining areas downstairs and a third upstairs • Spacious living and dining areas with an amazing sun room perfect for entertainment • Comfortable environment with multiple split system air conditioners • Both tiles and floorboards throughout the house • Extra large covered alfresco perfect for entertainment • Double lock up garage which could be used as a home office with plenty of storage • 556.7sqm corner block position perfect for a future street facing granny flat STCA Don't miss your chance to make this exceptional property yours. Contact us today to schedule a viewing and experience Greenfield Park living firsthand!