

35 Parkmore Road, Forest Hill, Vic 3131



Sold House

Thursday, 26 October 2023

35 Parkmore Road, Forest Hill, Vic 3131

Bedrooms: 4

Bathrooms: 2

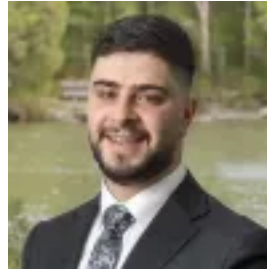
Parkings: 2

Area: 586 m2

Type: House



Hugh Francis
0401265338



Michael Ganavas
0388450888

\$1,420,000

Entering this charming residence evokes an instant sense of homecoming. Boasting a myriad of recent renovations, this property seamlessly harmonises the timeless allure of heritage with contemporary conveniences designed for family living. Nestled within meticulously landscaped gardens, this dwelling assures not only comfort and style but also enduring beauty. Its advantageous location ensures easy access to nearby schools, shopping centres, and parks, making it the ideal place for a vibrant family lifestyle. As you step inside, the entrance gracefully unfolds to reveal the inviting front living area adorned with an open fireplace and beautifully preserved original hardwood flooring. The kitchen, bathed in natural light, takes centre stage, featuring a 900mm freestanding gas oven, a European dishwasher, and elegant Artstone benchtops. Adjacently positioned to the kitchen, a dedicated study area graced with an expansive built-in bookshelf, creates a versatile zone perfect for both work and relaxation. A contemporary office/studio, equipped with a separate entrance, provides an ideal space for office or a separate living space. All four carpeted bedrooms ensure residents' comfort, three equipped with built-in robes and ceiling fans. The main bedroom further impresses with a newly renovated ensuite. Modern living conveniences are at your fingertips with features such as ducted gas heating, ducted evaporative cooling, and wall-mounted air conditioners, ensuring year-round comfort. External renovations include a two car carport, exposed aggregate driveway, and decking front and rear. This home offers the convenience of being closely situated to a range of local amenities. Families will particularly value the accessibility to Parkmore Primary School, St. Timothy's Primary School, Forest Hill College, and Emmaus College. A plethora of parks await your exploration or relaxation, including Davy Lane reserve, Nunawading Community Gardens, Forest Hill Oval, as well as Nunawading Aqualink. Brentford Square, Vermont South, and Forest Hill Chase cater to all your retail needs. Added inclusions: • Ducted gas heating • Ducted evaporative cooling • Ceiling Fans • Two wall mount split systems • Open fireplace • Ducted vacuum • Double glazing in the front room, and east facing bedrooms • Trex Transcend decking at the front • Covered decking and Bali hut at the rear • Attic access • Two water tanks with 8,000 litres combined capacity • Front doorbell with camera