

35 Parkridge Drive, Jilliby, NSW 2259

Acreage For Sale

Wednesday, 1 May 2024

35 Parkridge Drive, Jilliby, NSW 2259

Bedrooms: 4

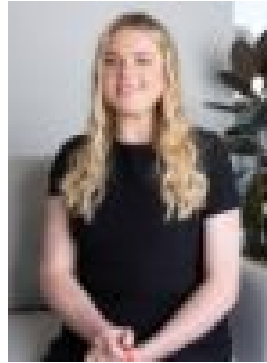
Bathrooms: 2

Parkings: 4

Type: Acreage



Scott Wall
0243152922



Kaela Wall
0243152922

New To Market

Welcome to your dream family home! Positioned on Jilliby's picturesque Parkridge Drive amongst other quality acreage properties, if you're looking for a quiet place to retreat and rest from the world yet would still like to be close to the M1 and Westfield Tuggerah, as well as the beach and quality schools, then this is it! This beautifully presented residence flows over a light-filled single level capturing scenic green views on one usable hectare (2.5 acres). Featuring four spacious bedrooms, two bathrooms, including a walk-in robe and ensuite in main bedroom. This home is perfect for family living with open plan kitchen and dining and an extra rumpus room! Slow combustion fireplace for those cozy winter nights. Outside there is a world of possibility for you to explore, with more than enough land to house a couple of alpacas or horses, perhaps rear some free-range chooks, or maybe some gardens and enjoy fresh produce all year-round. With ample water storage, including tank water and a dam the property is well equipped for most undertakings. Indulge in leisurely afternoons by the saltwater pool, basking in the warmth of the sun while solar panels keep energy costs low. All your parking needs are covered too with a double lock up garage under the home's roofline and large shed that allows you to store all your equipment and tools. This is not just a house; it's a lifestyle. Enjoy the freedom and space that comes with acreage living. Arrange a viewing today and experience the epitome of tranquil living in the heart of Jilliby.