

35 Pye Avenue, Northmead, NSW 2152

MANOR

Sold House

Saturday, 24 February 2024

35 Pye Avenue, Northmead, NSW 2152

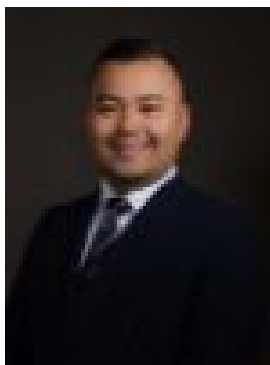
Bedrooms: 5

Bathrooms: 4

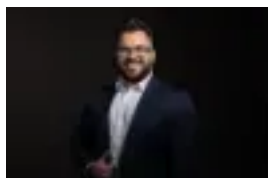
Parkings: 2

Area: 695 m2

Type: House



RINAT TALAT
0296395833



Arron Muckenschnabel
0480513506

\$2,321,000

Welcome to this exquisite 5-bedroom residence, a magnificent embodiment of Spanish colonial-style architecture. Nestled in the serene neighborhood of Pye Ave, Northmead, this stunning home offers an idyllic blend of luxurious living, natural beauty, and modern convenience.

Key Features:

- Location:** Situated on Pye Ave, one of Northmead's finest streets, this property enjoys a family-oriented neighborhood with a prime location on the cusp of North Rocks.
- Scenic Setting:** This residence is a nature lover's dream, directly backing onto Darling Mills Creek, providing a soothing and uninterrupted bush outlook. The serene creek and lush surroundings offer a peaceful and private ambiance.
- Privacy:** The property's layout ensures maximum privacy, with a side-on view of sprawling grassland, shielding you from the hustle and bustle of everyday life.
- Interior Features:** The interior of the home boasts multiple living areas, providing ample space for relaxation and entertainment. A separate dining area adds a touch of formality to your dining experiences, perfect for hosting guests. The large, fully renovated kitchen is thoughtfully designed and faces the reserve, allowing you to enjoy the natural surroundings while preparing meals. The living area features a high cathedral ceiling, creating a sense of grandeur and space.
- Outdoor Paradise:** A sparkling in-ground swimming pool graces the front yard, promising endless enjoyment during the summer months. It's the perfect setting for entertaining friends and family or simply unwinding in style.
- Versatile Accommodation:** The lower level of this home includes a self-contained one-bedroom flat, complete with its own separate access. This versatile space is ideal for use as a teenage retreat, in-law accommodation, or an attractive income-generating investment opportunity.
- Proximity:** Residents will appreciate the easy access to Parramatta CBD, with its array of shopping, dining, and cultural attractions. Westmead Hospital, a hub for healthcare excellence, is also just a stone's throw away. Furthermore, this property is poised for the future with access to the upcoming light rail system, making transportation even more convenient.

In summary, this 5-bedroom Spanish colonial-inspired residence on Pye Ave in Northmead offers a harmonious blend of luxurious living, natural beauty, and accessibility to key amenities. The idyllic creek-side location, versatile accommodation options, and the convenience of modern living make this property a rare and exquisite find. Experience the best of both worlds with this splendid home that provides an unparalleled quality of life.

Disclaimer: The above information has been gathered from sources that we believe are reliable. However, we cannot guarantee the accuracy of this information and nor do we accept responsibility for its accuracy. Any interested parties should rely on their own enquiries and judgment to determine the accuracy of this information for their own purposes. Images are for illustrative and design purposes only and do not represent the final product or finishes.