

35 Richey Promenade, Gisborne, Vic 3437

Sold Residential Land

Wednesday, 31 January 2024



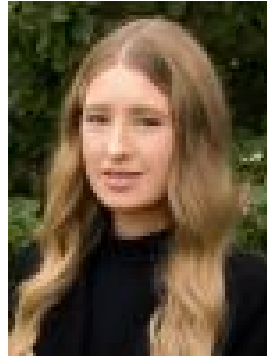
35 Richey Promenade, Gisborne, Vic 3437

Area: 991 m2

Type: Residential Land



Liam Gedye
0448771686



Katherine Gedye
0432570782

\$590,000

Proudly positioned within the emerging Willow Estate, and only a moments walking distance to the Willowbank primary school and local kindergarten, this is a premium opportunity to establish a family orientated Macedon Ranges Lifestyle. Sprawling across 991sqm (approx.) the titled allotment enjoys wide street frontage, allowing plenty of flexibility and is alongside the waterway featuring premium park views. Willow Estate offers the newly opened Willowbank Primary School, tree lined streets and an abundance of recreation and green space, perfectly suited for desirable family living. Situated in a sold-out release, this is a timely opportunity to secure a prime position within this masterplan estate, brimming with future amenities. Gisborne is situated within the heart of the Macedon Ranges and is surrounded by quintessential country towns, farmers markets and fine food establishments. Abundant walking and cycling tracks grace the pristine landscape, easily pleasing nature enthusiasts. The village centre offers wide array of amenities, including major supermarkets, a secondary school, sporting, recreation and medical facilities. The Macedon Ranges also borders the ever-popular Hepburn Shire Spa Region, perfect for day trips and weekends away. Gisborne is 45 minutes north of Melbourne's CBD, roughly half an hour's drive to Melbourne Airport and approximately 15 minutes away from Sunbury, Diggers Rest and Woodend. Nearby, direct, Calder freeway access makes commutes in a variety of directions easy. For further details please do not hesitate to contact Liam Gedye on 0448 771 686 or Katherine Gedye at 0432 570 782.