

35 Sapphire Drive, Port Macquarie, NSW 2444

Sold House

Monday, 28 August 2023



35 Sapphire Drive, Port Macquarie, NSW 2444

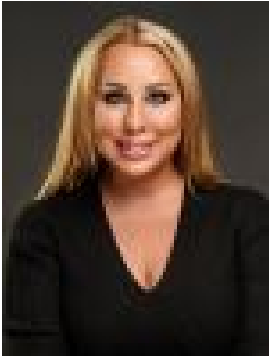
Bedrooms: 4

Bathrooms: 2

Parkings: 2

Area: 1047 m2

Type: House



Corrine Cunningham
0265838606



Tyson Cunningham
0481123047

\$900,000

Not only does this property offer a fabulous lifestyle, but it also presents a solid investment opportunity. Located in sought after Emerald Downs, this spacious 4-bedroom home sits privately back in a house proud street on approximately 1047sqm of land. Just imagine the possibilities with land of this rare size. Create your own outdoor oasis, complete with swimming pool and lush gardens, add another storey, backyard studio, or take the first step towards a prosperous future with potential for a villa or duplex development (STCA). Step indoors to the warmth of natural timber floors flowing throughout; discover two separate living rooms, dining-meals area, large modern kitchen, well-appointed 3-way bathroom, and four generous bedrooms including a light filled master with ensuite. Outdoors is perfect for year-round entertaining with a huge timber deck at the front, and an expansive covered patio at the rear. The slightly elevated aspect captures breeze and a peaceful outlook across the surrounding treetops. A double garage provides the convenience of drive-thru access on one side to a big sunny backyard bordered by easy care gardens. The level of storage in this home is incredible. This tightly held location is nearby parks and playgrounds, less than 2kms to Lighthouse Beach, only 600m to Emerald Downs Golf Course, local shopping centre and family friendly Tacking Point Tavern. Tacking Point Primary School is approximately 4 minutes drive from the doorstep. So much more than meets the eye, unlock the potential, or simply enjoy coming home to a sanctuary where space and privacy abound.