

**35 View Road, Vermont, Vic 3133**



**Sold House**

Wednesday, 20 September 2023

35 View Road, Vermont, Vic 3133

**Bedrooms: 2**

**Bathrooms: 1**

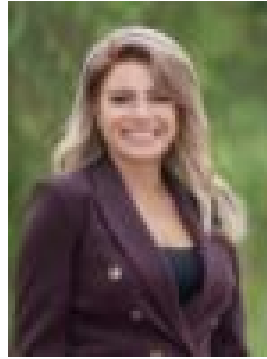
**Parkings: 1**

**Area: 231 m2**

**Type: House**



Charles Shi  
0423633253



Christine Bafas  
0427835610

**\$772,000**

The perfect choice for first homebuyers, downsizers and investors, this radiant single-level home is extremely low-maintenance and would suit those looking for a quiet and relaxed lifestyle. Well presented with a fresh coat of paint and modern flooring, the spacious living and dining room is flooded in light and provide immediate comfort, accompanied by a casual meals zone and a neat kitchen featuring a breakfast bar, an upright oven/gas cooker and ample storage space. Both bedrooms are generous in size and include built-in robes, well serviced by a sparkling bathroom with a separate toilet and full-size laundry. Other highlights include a low-maintenance courtyard, ducted heating, evaporative cooling and a carport. In a popular neighbourhood walking distance and zoned for Vermont Primary School and Secondary College, with seamless access to bus services, Mitcham Train Station, Brentford Square and EastLink.