

35 Zannon Crescent, Doreen, Vic 3754

CHWYLA

House For Sale

Wednesday, 10 April 2024

35 Zannon Crescent, Doreen, Vic 3754

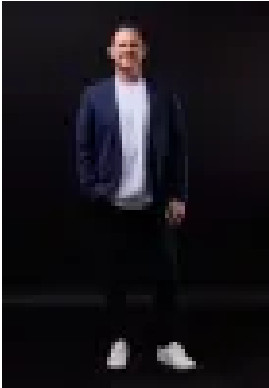
Bedrooms: 4

Bathrooms: 3

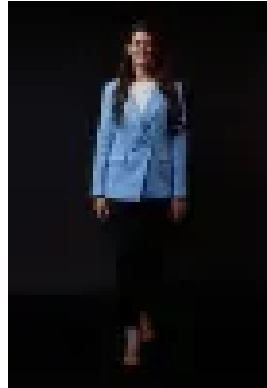
Parkings: 2

Area: 2505 m2

Type: House



Paul Chwyla
0386009995



Stacy Richards
0386009995

\$1,550,000 - \$1,620,000

Make more of : 2,505m² block 2 Original Laurimar 2 Views 2 Four bedrooms 2 Three bathrooms 2 Powder room 2 Two living areas 2 Study 2 Double garage 2 Dual concrete driveways 2 Automatic gated side access into significant parking 2 12 x 8m shed with roller door 2 Studio with split system 2 Pool 2 Front verandah 2 Fresh paint 2 Timber staircase 2 Engineered floorboards 2 High ceilings 2 Downlights 2 Blinds 2 Skylight in kitchen 2 Granite kitchen benchtops 2 900mm Smeg appliances 2 Dishwasher 2 Coffee machine 2 Walk-in pantry 2 Laundry with considerable built-in storage 2 Master with fitted out walk-in robe 2 Linen cupboard 2 Downstairs storeroom with water connection 2 Under home storage 2 Spa bath 2 Rainwater showerhead 2 Coonara 2 Ducted heating 2 Evaporative cooling 2 Split system 2 Covered alfresco with views and ceiling fan 2 Downstairs patio 2 Basketball half court with basketball ring 2 Lots of lawn 2 Water tank 2 Garden shed 2 Surrounded by high end homes 2 Quiet street 2 210m to Brookwood Ave bus stop 2 500m to off leash dog park 2 650m to Hilltop Park, BBQ area, basketball court 2 1km to Katandra Rise Hilltop Park 2 1.7km to Laurimar shops 2 The initial appeal – An oversized upstairs outdoor entertaining with views [you'll have front seats to some pretty special sunset shows], and a downstairs alfresco by the pool. There's also a separate studio for that home business you've always imagined. The main attraction – A big family home on a 2,505m² block in Original Laurimar, with a tightly held Zannon Crescent address. If you have machinery, trucks, vans, boats, trailers, collectors, or all of the above, there is space for all the wheels you own ... plus space for all the wheels you'd like to own. This property has the trifecta: dual driveways, automatic gated side access into secure backyard parking, and a 12 x 8m shed with a hoist. Your journey here starts this Saturday.