

350/67-81 Maroondah Highway, Croydon, Vic 3136



Sold Retirement Living

Tuesday, 5 March 2024

350/67-81 Maroondah Highway, Croydon, Vic 3136

Bedrooms: 2

Bathrooms: 1

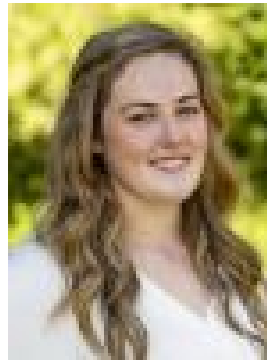
Parkings: 1

Area: 217 m2

Type: Retirement Living



Phil Licciardi
0408808108



Keisha Chester
0412725883

\$625,000

Enjoy an easy transition into retirement in a safe and social environment, with this bright and beautiful villa home in Aveo Cherry Tree Grove. Set upon 30 acres of well-maintained gardens, Aveo Cherry Tree Grove is a vibrant village where residents can partake in various scheduled activities and make use of numerous amenities, such as a heated swimming pool and spa, bus services, snooker and table tennis tables, indoor and outdoor bowls, a restaurant plus a hair and beauty salon. The village is conveniently located within walking distance of public bus services, parks, the Mullum Mullum Creek Trail and family-friendly restaurants. It is also a short commute to Eastland, EastLink and Croydon's town centre complete with excellent shopping and dining options, recreational facilities and a train station.- Nestled in the corner of a cul-de-sac near the entrance of the village, the villa's position offers both wonderful privacy and convenience- New carpet graces the villa's living and sleeping quarters, beginning with the super-spacious lounge and dining room with a gas log heater- The fully equipped kitchen with meals area allows for easy food preparation and is adjoined by a skylight-lit laundry with two storage cupboards- There are three rooms for sleep or study- The largest of the bedrooms has a walk-in wardrobe. The second bedroom has mirrored sliding wardrobes and outdoor access. The smallest of the rooms also has outdoor access, making it ideal for office use- A skylight-lit bathroom with a large shower, vanity and toilet services the rooms- A wash closet with a second toilet is placed alongside for additional convenience- Outside, lovely gardens lined with lawns, rose bushes and box hedges frame two paved alfresco areas- Ducted heating and refrigerated air conditioning assist with keeping the villa at a comfortable temperature- An allocated single carport space provides sheltered parking