

355/221 - 229 Sydney Park Road, Erskineville, NSW

BresicWhitney

2043

Sold Apartment

Thursday, 14 December 2023

355/221 - 229 Sydney Park Road, Erskineville, NSW 2043

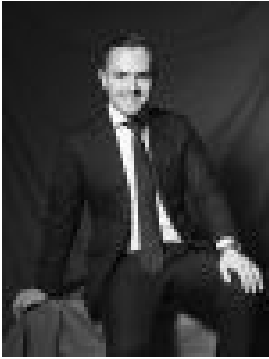
Bedrooms: 2

Bathrooms: 2

Parkings: 1

Area: 155 m2

Type: Apartment



Luke Grosvenor
0422792983

\$1,350,000

With green views and a north-facing in/outdoor living space, this renovated apartment is set in impressive resort-style surrounds with swimming pool, gym and tennis court. Sold off market in just 7 days for a new 2-bedroom building record... contact us for more information on how BresicWhitney works differently. Highlights* Sep. between beds, master w/ ensuite* Valuable integrated study space on entry* Renovated kitchen w/ stone benchtops* Open-plan living flows to alfresco loggia* Ideal north aspect light & leafy backdrops* Outdoor swimming pool, gym, tennis court* Masses of green space & common gardens* Seconds to King Street, easy CBD commute* SOLD off-market w/ BresicWhitney* Buying or selling? Ask your questions...