

3580 Formby Road, Lakelands, WA 6180



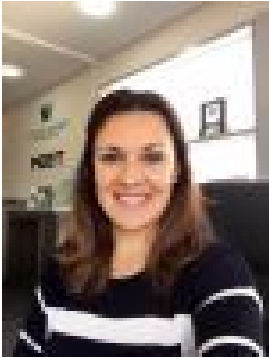
Sold Residential Land

Thursday, 5 October 2023

3580 Formby Road, Lakelands, WA 6180

Area: 450 m2

Type: Residential Land



Raelyn Smith
0459955519

\$229,000

There is more to life at LakelandsLakelands estate is situated in Perth's high-growth southern corridor just ten minutes north of Mandurah and fifty minutes south of the CBD. Offering everything you need for an enviable and rewarding way of life, this masterplanned community benefits from the thriving Lakelands suburb profile, with major transport, employment, retail, educational and recreational hubs all close by. Lots located in the Westlake Precinct are just 4 minutes from the beach. A number of parks and playgrounds are also within easy reach, providing ample opportunities to head outside and enjoy some fresh air and exercise amongst the stunning natural surrounds. For more information or to enquire about this perfectly located estate, please contact our friendly Sales Representative, Raelyn Smith.