

3582 Remembrance Circuit, Fraser Rise, Vic 3336



Townhouse For Sale

Thursday, 4 January 2024

3582 Remembrance Circuit, Fraser Rise, Vic 3336

Bedrooms: 4

Bathrooms: 3

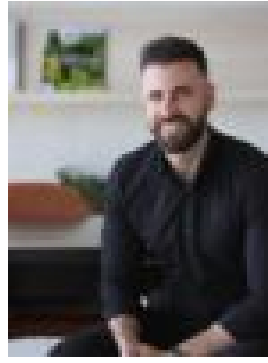
Parkings: 2

Area: 183 m2

Type: Townhouse



Stefan Valentini
1300349213



Daniel Dammo
1300349213

\$575,775 Fixed Price

Aspire, A place to make life long friends. Introducing the Mondina Lane collection at Aspire, Fraser Rise by Maple Living; a captivating release of architecturally-designed townhomes for all families at every stage of life. This is not your standard townhome. Carefully created facades, superior standard inclusions, fixed pricing with no hidden or additional costs, and much more. Open floorplans have been designed to optimise space and natural light, creating warm & comforting living areas to lounge and relax. Partnered with Australia's leading brands – Dulux Paint, Reece Bathware, Inalco Appliances, Bunnings Trade, Eufy Security, Austral Bricks, and more. The Maple Living difference is clear in our quality standard inclusions:

- Architecturally Designed Facade
- Fixed Site Costs Including Rock Removal
- Boundary Fencing
- Fully Landscaped Front and Backyard
- Coloured Concrete Driveway
- Eufy Wireless Security Camera System
- Split System to Living Area
- Kitchen Stone Benchtop
- LED Downlights Throughout
- InAlto Oven, Dishwasher, Cooktop & Rangehood
- Shelving to Pantry and All Robes
- Roller Blinds Throughout

At Aspire, there's no waiting for roads, schools and shops to be built. Your connection to established surrounds and over 900 families (and counting!) already living here means you'll feel at home right away. First home owners may be eligible to take an additional \$10,000 off the listed price with the First Home Owners Grant (FHOG). Register your interest today for more information. *Prices are correct at the time of listing and are subject to change without notice or obligation. Images are for illustrative purposes only and may include items that are not included in a standard contract. For detailed pricing and inclusions, please contact a Maple Living representative.