

36/253 Ashmore Road, Benowa, Qld 4217

Apartment For Sale

Friday, 5 January 2024

SUTHERLANDgroup
PROPERTY

36/253 Ashmore Road, Benowa, Qld 4217

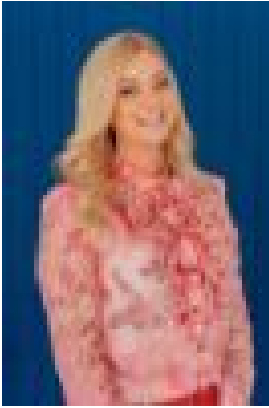
Bedrooms: 3

Bathrooms: 2

Parkings: 2

Area: 207 m2

Type: Apartment



Nicci Gray

1300798729

\$925,000

Discover the allure of this expansive three-bedroom, two-bathroom residence boasting two secure car parks! Enjoy the luxury of a large balcony that extends your living space, adorned with modern fixtures and ample window panels, bathing the interiors in abundant natural light. Experience the elevated lifestyle with access to a charming Rooftop BBQ area and a sprawling lawn, creating the perfect setting to unwind while relishing panoramic views of the Surfers Paradise skyline. Conveniently located near Benowa Shopping Centre, opposite the Botanical Gardens, and a mere five-minute drive to the iconic Surfers Paradise Beach. Woodtree Residences seamlessly blend the beauty of nature with the convenience of urban living. Designed to capture uninterrupted panoramic views, this exclusive limited release comprises 39 modern apartments spread across three levels, accessible via two lifts. The architecture, inspired by nature and guided by sustainability, embraces timeless aesthetics with a modern twist through the use of natural materials. Residents of Woodtree Residences can indulge in the Gold Coast's idyllic climate on the communal rooftop terrace, meticulously designed to enhance the outdoor lifestyle. Immerse yourself in a unique living experience where nature meets modernity, and panoramic views become an everyday luxury.*Rooftop Yoga pavilion*Zen garden with Gold Coast Skyline views*Rooftop BBQ and entertainment area*Walk across the street to Botanical Gardens*Walking distance to Benowa Gardens Shopping Centre*2 Elevators, with only 4 levels you will not be waiting long*Walking distance to 3 schools*500m to Pindara private hospital*10 minutes to Surfers Paradise and world-renowned surf beaches*Affordable Body Corp Fees