

36 Abate Place, Midway Point, Tas 7171



Sold House

Monday, 14 August 2023

36 Abate Place, Midway Point, Tas 7171

Bedrooms: 5

Bathrooms: 3

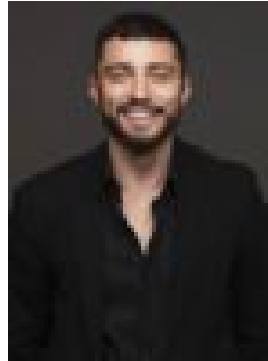
Parkings: 2

Area: 674 m2

Type: House



Matthew Macdonald
0429229087



Cam Rogers
0475002814

\$950,000

Nestled in a coveted waterside locale, this ~250 sqm home completed in 2020 epitomizes luxury with its avant-garde design and superior finishes. Enter a realm of sophistication where expansive, sunlit interiors seamlessly blend with an architectural deck, setting the stage for unparalleled alfresco dining against a backdrop of breathtaking water and mountain vistas. The home's heart, an open-plan living space, brims with natural light. The state-of-the-art kitchen showcases top-tier AEG appliances, generous soft-close storage options, and a grand granite island that effortlessly doubles as a breakfast bar. With two upper level and three lower level bedrooms every space ensures comfort and utility. Revel in the opulence of the master suite with its rose gold finished ensuite, while the second bathroom offers thoughtful disability-friendly design. The lower level presents a near self-contained sanctuary, complete with an expansive entertainment area, potential office or fifth bedroom, and a chic third bathroom. Prioritize security with discreet driveway access, leading to a dual-car garage with remote functionality and direct entry into the living quarters. Situated in the family-centric Midway Point, indulge in nearby amenities from surf beaches, serene waterways, to the renowned Tasmania and Pittwater Golf Clubs. The bustling Sorell precinct, a mere five minutes away, houses myriad amenities including schools and medical centers. Moreover, relish proximity to Hobart Airport, Cambridge Homemaker Centre, and the enchanting Coal River Valley and Richmond Village, offering a tapestry of local flavours and landscapes.