

36 Bushlark Court, Berwick, Vic 3806



Residential Land For Sale

Monday, 20 May 2024

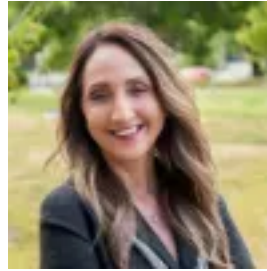
36 Bushlark Court, Berwick, Vic 3806

Area: 885 m2

Type: Residential Land



Debbie Brettner
0390887488



Julie Petty
0390887488

\$900,000 - \$990,000

This 885sqm (approx.) block of land is a golden opportunity in a fast-growing pocket of Melbourne. Featuring a wide 22m (approx.) frontage, there's heaps of space here to get creative. Prime for development on the popular Bellbird Park Estate, this is your chance to dream big and cash in! Located in the final eastern stage of Bellbird Park, find yourself surrounded by exceptional street presence and other prime real estate - with the opportunity to create your own masterpiece.³⁶ Bushlark Court is a highly attractive location that offers the very best of both worlds. Adjacent to a reserve and surrounded by beautiful countryside, this is a peaceful, secure, and green neighbourhood that holds huge appeal for growing families. This magnificent, elevated block also offers sublime vista views. Within ten minutes of everything you might need for easy day-to-day living, including walking distance to Berwick Village and Wilson Botanic Park, and minutes from Monash Freeway, Berwick Station, Casey Hospital, Parkhill Plaza, Westfield Fountain Gate, Federation University, the Chisholm Institute, daycare, and kindergartens. Within proximity to prestigious schools including but not limited to Haileybury, St Margaret's, Berwick Grammar School, Beacons Hills, St Francis, St Michaels, and Berwick College. Whether you're considering luxury townhouses or your own custom-designed forever home, the potential here is immense...and it could all be yours. This is a valuable opportunity in a fantastic location. Call Debbie or Julie today to discuss this fantastic opportunity.