

**36 Edara Circuit, Greenvale, Vic 3059**



**House For Sale**

Wednesday, 17 April 2024

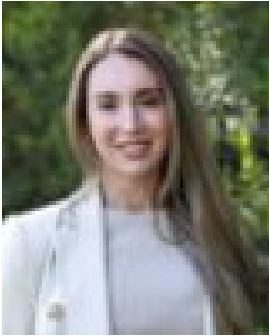
36 Edara Circuit, Greenvale, Vic 3059

**Bedrooms: 4**

**Bathrooms: 2**

**Parkings: 2**

**Type: House**



Stephanie Lentini  
0390705095



Anthony Lapadula  
0390705095

**\$680,000 - \$730,000**

Modern style, space and single level convenience highlight the everlasting appeal of this centrally located four bedroom, two bathroom family residence set on an easy-to-manage block of land approximately. Bright and inviting interiors elevate the homes allure, while a free-flowing floor plan ensures functionality and flexibility. Comprising separate living room followed by large open plan family domain. Incorporating dining area and stylish kitchen appointed with stone topped island bench, a large pantry, stainless steel Euro gas hob, under bench oven and dishwasher. Step outside to an undercover alfresco zone and hedged gardens providing added privacy and a quiet haven in which to relax, play and entertain. Spacious bedrooms are zoned for comfort and privacy. They include main with walk-in-robe and ensuite. Further bedrooms enjoy built-in-ropes and share modern tiled bathroom, separate w/c and laundry. Complemented by ducted heating, split-system air conditioner, blinds and automated double garage with direct home entry. Perfectly positioned within easy reach of Greenvale Village shops, early learning and childcare centres, schools, parklands, buses and nearby to Woodlands Historic Park, Melbourne Airport and freeways, this home is worth an immediate inspection.