

36 Finke Street, South Ripley, Qld 4306



House For Sale

Monday, 22 April 2024

36 Finke Street, South Ripley, Qld 4306

Bedrooms: 4

Bathrooms: 2

Parkings: 2

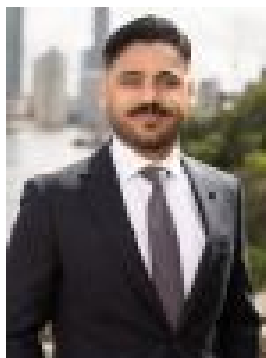
Area: 433 m2

Type: House



Kamar Bal

0422089599



Umair Khan

0400444786

Contact Agent!

Welcome to 36 Finke Street South Ripley! This stunning 4-bedroom, 2-bathroom house is the perfect family home. With a spacious living room, dining room, and modern kitchen, this property offers plenty of space for entertaining guests or relaxing with loved ones. The property also features a double garage, perfect for storing vehicles or extra storage. Constructed in 2024, this home is practically brand new and features modern architecture and design elements throughout. The property sits on a 433 sqm lot, providing a generous amount of outdoor space for children to play or for hosting outdoor gatherings. Located in a quiet and friendly neighborhood, this property is the perfect place to call home. Don't miss out on this amazing opportunity - Contact kamar Bal 0422089599 today for more information on this beautiful property!

Property details:

- Brand New Built
- 240.76 m² home on a 443m² block
- Rental appraisal: \$640 to \$660/week approx.
- Raised Porch
- Inside:
 - 4 good size bedrooms with built-ins, ducted-air-conditioning, fans and hybrid flooring
 - Master bedroom with a walk-in robe, air-conditioning, fans and an ensuite
 - Ensuite is complete with an good size shower, double vanity with Caesarstone bench-top and toilet
 - Spacious and airy open-plan kitchen, living and dining areas open up to a large tiled alfresco, perfect for entertaining
 - Large media room
 - Beautiful kitchen includes Caesarstone benches, 900mm free-standing gas cooktop, oven, double fridge space, large walk-in pantry, soft close drawers and ample storage cupboards
 - Main bathroom with shower, vanity, bath and toilet
 - Large internal laundry with ample storage space
 - NBN Ready

Location: This beautiful home is located in the visionary new Providence Community in the heart of South Ripley, conveniently just off the Centenary Highway. As one of the largest growth areas in South East Queensland, Providence is a fantastic mix of community spirit and "at your doorstep" convenience, making it the ideal place to raise your growing family.

- 5 minute* walk to the Ripley Valley State School
- 5 minute* walk to the Ripley Valley State Secondary College
- 8 minute* walk to the local Café and Splash'n'Play children's park
- 8 minute* walk to the Medical Precinct and proposed Ripley Town Centre
- 10 minute* drive to Orion Springfield Town Centre
- 15 minutes* to Springfield Central Train Station
- 35 minute * to the the Brisbane CBD
- 45 minute* to the Brisbane Airport

Disclaimer: Ray White Acacia Ridge has taken all reasonable steps to ensure that the information in this advertisement is true and correct but accepts no responsibility and disclaims all liability in respect to any errors, omissions, inaccuracies or misstatements contained. Prospective purchasers should make their own inquiries to verify the information contained in this advertisement.