

36 Heidelberg Avenue, Newington, NSW 2127

Horwood Nolan.

Sold House

Friday, 1 March 2024

36 Heidelberg Avenue, Newington, NSW 2127

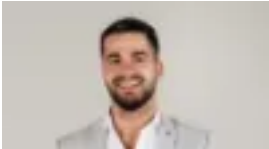
Bedrooms: 3

Bathrooms: 2

Parkings: 2

Area: 266 m2

Type: House



Jacob Saleh

0297436656

Contact agent

Exquisite finishes featuring natural limestone flooring to the living areas, marble mosaic tiles in the new kitchen and bathrooms, and elegant provincial tapware compliment this newly enhanced double storey home with an aura of quality and prestige. Impeccably presented for an executive lifestyle, the property offers flowing interiors radiating natural light featuring superb open plan living, dining and a gourmet island kitchen on entry level, while upstairs comprises three peaceful bedrooms including an oversized master with walk-in robe, luxurious ensuite and its own private balcony retreat. Thoughtfully renovated with a low maintenance yet sophisticated ambience, ideal for a young couple, family or empty nesters, the home also provides a sun drenched terrace and courtyard garden area plus an internal access lock-up garage and driveway parking. This desirable pocket suburb is of course perfectly positioned for a lifestyle of convenience – at the gateway of Sydney Olympic Park entertainment and sporting facilities and within 10mins walk of Newington Public School, Newington Marketplace and buses to the major centres of Strathfield, Burwood, Rhodes and Parramatta. High 3m ceilings Wi-Fi controlled ducted/split air conditioning Spacious living and dining flowing outdoors Large island kitchen featuring quality appliances Renovated ensuite, full bath, powder room Extra-large master retreat including balcony Two additional bedrooms offering built-ins Entertainment terrace & courtyard garden Lock-up garage and driveway parking space