

36 Portia Circuit, Clyde North, Vic 3978

House For Rent

Thursday, 4 April 2024



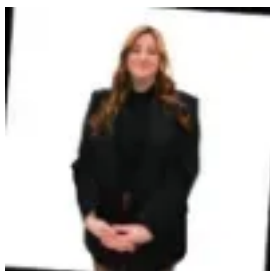
36 Portia Circuit, Clyde North, Vic 3978

Bedrooms: 4

Bathrooms: 3

Parkings: 2

Type: House



Natalie Hudson
0397072000

\$700

Situated in a delightful high profile position is this beautiful 4 bedroom home that ticks all the boxes! This well-presented home has everything you and your family desire, with a superb location, open plan living and landscaped gardens. Located in the highly sought Clyde North area, this home is only a short distance to Eden Rise Shopping, Local Schools and nearby Transport. This home has everything you could need and more. Features include- Large master bedroom fitted with a huge walk in robe and en suite with double vanity- 3 Generous sized bedrooms, with double built in robes- Central bathroom with close proximity to service all bedrooms- Spacious formal lounge- Informal dining/living areas- Separate rumpus room- Open study- Substantial kitchen with stainless steel appliances overlooking outdoor alfresco area, perfect set up for summer and ideal for entertaining your family and friends.- Ducted Heating- Evaporative cooling- Double garage with internal Located close to Hillcrest and Kambrya High Schools **BE SURE NOT MISS OUT!**