

36 Richwood Ridge, Port Macquarie, NSW 2444

Sold House

Sunday, 13 August 2023



36 Richwood Ridge, Port Macquarie, NSW 2444

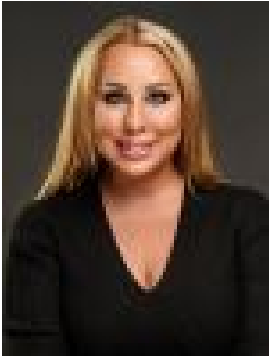
Bedrooms: 4

Bathrooms: 2

Parkings: 2

Area: 600 m2

Type: House



Corrine Cunningham
0265838606



Tyson Cunningham
0481123047

\$1,275,000

Paying homage to its coastal environment this architecturally designed home blends the sleek minimalism of modern design, with the relaxed feel of contemporary style, to create an idyllic retreat. This home is stunning, presenting a brilliant all level floor plan that cleverly maximises every inch of space with a strong focus on seamless indoor and outdoor entertaining. Indoors reveals a private lounge-media room, luxurious parent's retreat, sophisticated kitchen, three-bedroom guest wing, and elegant main bathroom and ensuite. Raked ceilings and custom windows allow natural light to radiate throughout. Slight elevation captures afternoon sea breeze and a tranquil tree-lined outlook. High quality inclusions fused with attention to detail finishes enhance the appeal. Embracing a north aspect, the sun-drenched alfresco and low-maintenance backyard feel like an extension of the kitchen and open plan living and dining space. Surrounded by green spaces this haven sits in a quiet culdesac offering easy access to walkways and cycling tracks through nature reserve. Just 450m away is a well-known neighbourhood park and playground. Spectacular Lighthouse Beach is just minutes from the doorstep and set within the sought-after zoning for Tacking Point Primary School. Within proximity are two 18-hole golf courses, a popular Tavern, Plaza Shopping Centre, alfresco cafes, rainforest, and coastline walking trails. A beautiful family home or luxurious downsizing abode, your relaxed coastal lifestyle in beautiful Port Macquarie begins here at 36 Richwood Ridge. Architectural excellence of clean lines & high-end inclusions. Detailed finishes, impressive butler's pantry, sleek storage. North aspect floods the interiors with natural light. Raked ceilings, Smeg appliances, waterfall edge stone island. Engineered oak floors add warmth to the fresh white palette. Led lighting, ducted heating-cooling, coastal ceiling fans. Large sun-drenched alfresco, easy care lush lawn & gardens. Nearby reserve & modern parkland, 4km to Lighthouse Beach. Proximity to Tacking Point Primary School, shops, alfresco cafes.