

# 36 Timber Ridge, Doncaster, Vic 3108



## House For Sale

Friday, 19 January 2024

36 Timber Ridge, Doncaster, Vic 3108

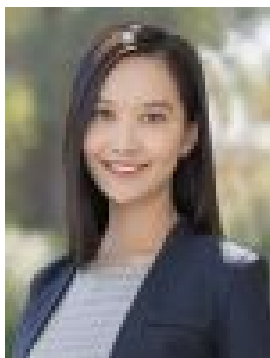
Bedrooms: 4

Bathrooms: 4

Parkings: 2

Area: 382 m2

Type: House



Isabella Kou  
0412206082

**\$1.75m - \$1.9m**

Boasting 35sq (approx.) of high-end style and luxury, this feature-packed four-bedroom, four-bathroom executive residence offers an immediate lifestyle upgrade in one of Doncaster's best locations inside the prized Templestowe Heights Primary School and Templestowe College catchment area. Offering genuine house-like proportions on a high-impact, low-maintenance 382sqm (approx.) north-facing block with no shared land, private driveway, two fashionable living areas and high-end finishes, functional everyday living with a luxurious twist is at the core of this quality-built residence. A luxurious fully-tiled ensuite to every bedroom highlights the home's commitment to showering each occupant with a luxurious sense of comfort, while the presence of a private guest bedroom downstairs invites empty nesters to upgrade their golden years to a class above. An elite entertainer's kitchen with Miele appliances enjoys pride of place in the chic open-plan living, which extends onto an undercover alfresco for seamless indoor-outdoor entertaining, while a central retreat upstairs successfully separates the oversized main bedroom from the children's two-bedroom plus study zone. Striking 3m high ceilings, double-glazed windows, ducted climate control and abundant storage add further delight to this exquisite residence, which is footsteps from Timber Ridge Reserve, an easy walk to Macedon Square, Village Avenue shops, Manningham Medical Centre and the 908 bus that'll have you in the CBD in 20 minutes (approx.) and minutes to Westfield Doncaster, schools and the Park + Ride.