

36 Walkers Road, Woodend, Vic 3442

BOUND

House For Sale

Wednesday, 15 May 2024

36 Walkers Road, Woodend, Vic 3442

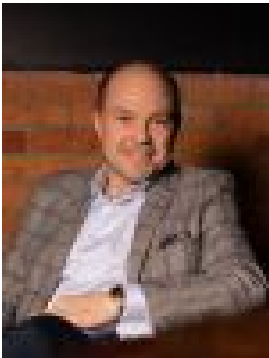
Bedrooms: 4

Bathrooms: 2

Parkings: 2

Area: 5387 m2

Type: House



Rhys Nuttall



Lynne Payne
0479068228

\$2,000,000-\$2,200,000

For Sale by Expressions of Interest closing Thursday 20th June at 2pm (Unless sold prior)“Why we like the property” (agent perspective)Offering an exquisite lifestyle on a generous allotment of 5,387m2 (approx.) of manicured gardens and wide-open spaces, prepare to fulfil every wish with this character-filled country residence. Masterfully designed for premium family living with bespoke detailing and premium inclusions that need to be seen to be truly appreciated.A welcoming façade framed by ornate gardens, designer outdoor lighting and the charm of a wide veranda invites you into light-filled spaces that host a myriad of custom features highlighting a home of superior standing with timber floors, dado wall panelling, wainscoting and ornate ceiling roses and trims.Picture perfect interiors offer open plan family living and entertaining on a grand scale with an effortless transition to the stunning outdoor alfresco entertaining area, sheltered by vine leaves and offering the perfect spot for intimate family gatherings with the largest of celebrations able to spill out to the expansive grounds where kids can play, friends gather, and memories are made.Central to the home is the modern country kitchen featuring bespoke, shaker-style cabinetry, stone island bench and European appliances that will delight the home chef.A flexible floorplan offers zoned living and accommodation with a separate media room featuring a projector and surround sound and well-designed office with built in cabinetry and external access.Zoned for maximum privacy and rest, three generous bedrooms feature built-in robes and share the family-sized bathroom with separate shower, clawfoot bath and WC. A sumptuous master suite would rival the best hotels and hosts a delightful window seat, walk-in robe, plantation shutters and full ensuite.“What the property offers” (property perspective)Well designed to ensure an ever-changing landscape from every vantage point of the home, established country gardens inspire and delight, offering a welcoming streetscape, private alfresco areas and abundant space for the kids to play.Overflowing with features including privacy border hedging, established formal and informal gardens, vegetable patch, chicken coop and double garage with workshop for the home handy person/trade person.Offering a private lifestyle sanctuary within moments of popular Woodend, this country residence provides the best of both worlds – a quiet family retreat to escape to where the kids can play unhindered, located only moments from schools, transport, cafes, shopping and amenities in the highly sought Macedon Ranges offering a premium country lifestyle within an hour of metropolitan Melbourne.“What you love about the property” (vendor perspective)We’ve loved the opportunity to enjoy such a beautiful home and property where we’ve all grown and thrived. The lifestyle that open spaces, a vegetable patch and resident chooks have provided us is something that money can’t buy – an opportunity to slow down and give yourself up to nature and the surroundings. The home itself has been a big part of the family with many occasions, celebrations and milestones being shared within. The close proximity to Woodend and the positives of being ‘arm’s length’ from the hustle and bustle of Melbourne ensure the next family will love this home as much as we have.