

361/26 Jasmine Street, Botany, NSW 2019

Sold Apartment

Friday, 3 November 2023

361/26 Jasmine Street, Botany, NSW 2019

Bedrooms: 2

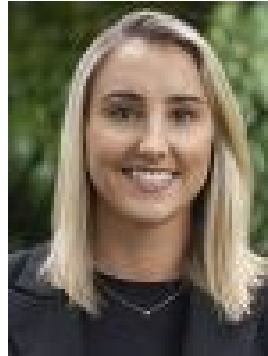
Bathrooms: 2

Parkings: 2

Type: Apartment



Marnie Seinor
0425255200



Danielle Leemhuis
0402642718

Contact agent

Capturing tree lined district outlooks to Port Botany, this spacious sixth floor apartment presents a great prospect for a comfortable modern lifestyle. It's set in a well kept complex, footsteps from cafés and Booralee Park while a walk to Botany Road shops.- Generous open living and dining area extends easily outdoors- Expansive entertaining terrace as well as large leafy garden- Contemporary kitchen features gas cooking and stone benchtops- Two double bedrooms include built-ins and shared balcony- Sizeable main bedroom provides walk-in wardrobe and ensuite- Full main bathroom, internal laundry room, air conditioning- Timber floors, study, storage cage and secure dual car space- Pet-friendly building offers intercom entry and lift access- Perfect for young families, downsizers and investors alike- Close to buses, Sydney Airport, the M1 Motorway and the city